



Husqvarna[®]

**OSHA SILICA
REGULATION GUIDE**

Remote Demolition



What is silica dust?

Silica dust is what is produced when concrete, bricks, blocks, etc are cut, and while it might seem harmless, it contains crystalline silica. The existence of crystalline silica and the hazards it can cause to a worker's body – silicosis, chronic obstructive pulmonary disease and kidney disease – has been known for decades. That is why Husqvarna Construction Products has been developing solutions to control dust for decades.

Since OSHA released the final ruling on crystalline silica exposure on March 24, 2016, how to control this dust has been a major concern for contractors. Mostly because the ruling places a lot of weight on the contractor's shoulders, but Husqvarna is here to support you with information and products to assist with compliance.

We always work towards finding the best solution for our customers – from both an efficiency standpoint and from a worker's view. OSHA has been working on a final ruling for the past several years, and since the first ruling on silica exposure Husqvarna Construction Products has been working to develop ways to suppress the crystalline silica and keep workers more safe.

This document will help guide you through how our products will help meet and/or exceed the OSHA rules, keeping you in compliance.

For more information on OSHA
silica exposure guidelines visit:

<https://www.osha.gov/silica/>



START DATE: September 23, 2017

The final OSHA ruling revises the amount of crystalline silica a worker should be exposed to. The key takeaways of the ruling include:

- The permissible exposure limit will be set at 50 micrograms per cubic meter of air, averaged over an eight hour shift.
- ***Employers will be required to take measures to control silica, either through using water, dust collection systems, ventilation or providing respirators.*** Employers will also be required to limit the amount of time a worker can be exposed to hazardous environments, write an exposure control plan, designate a competent person, offer medical exams to highly exposed workers and train workers on the risks and how to avoid silica dust.

Penalty Amounts Adjusted for Inflation as of January 13, 2017

TYPE OF VIOLATION	MAXIMUM PENALTY
SERIOUS/OTHER THAN SERIOUS POSTING REQUIREMENTS	\$12,675.00 per violation
FAILURE TO ABATE	\$12,675.00 per day beyond abatement date
WILLFUL OR REPEATED VIOLATIONS	\$126,749.00 per violation

Penalty amounts listed above may change.
For more information on OSHA penalty guidelines visit:

<https://www.osha.gov/penalties/>

What does OSHA require from you?

FROM TABLE 1 §29 CFR 1926.1153			
Equipment/Task	Engineering & work practice control method	Required respiratory protection and minimum Assigned protection factor (apf)	
		Less than or equal to 4 hours/shift	Greater than 4 hours/shift
(xvii) Heavy equipment and utility vehicles used to abrade or fracture silica containing materials (e.g., hoe-ramming, rock ripping) or used during demolition activities involving silica-containing materials	Operate equipment from within an enclosed cab. When employees outside of the cab are engaged in the task, apply water and/or dust suppressants as necessary to minimize dust emissions	None	None

How Husqvarna can help you meet requirements:

RECOMMENDED REMOTE DEMOLITION EQUIPMENT

Our remote-controlled demolition robots are the very latest in demolition machines, featuring high power, low weight and functional design. Our DXR machines have a modern and easy-to-use remote control, with unrivaled user-friendliness and design.

Remote Demolition Equipment

OSHA Compliance Cross Reference

Models	OSHA TABLE 1 Recommended Dust Supression	Feature	Recommended Accessories or Equipment	Additional Dust Control
ALL DXR MODELS	Most closely associated with heavy equipment	Remote control allows operator to be further from dust origination	Misting with breaker use Breaker dust suppression kits	A 600 A 1200



Husqvarna Remote Demolition Equipment EQUIPMENT



DXR 310



DXR 300



DXR 270



DXR 250



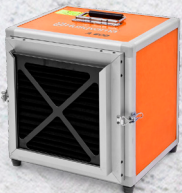
DXR 140

NEW WIRELESS REMOTE CONTROL

The market's most modern and easy-to-use, featuring redesigned joysticks to increase responsiveness and ultimately precision. It controls everything the machine does, simply and conveniently. The 3.5-inch color display is easy to read and uses industrial Bluetooth technology.



SUPPLEMENTARY DUST SUPPRESSION EQUIPMENT



A 600



A 1200



17400 West 119th St. Olathe, KS 66061
 Phone: 800-288-5040 Fax: 800-825-0028
 Web: www.husqvarnacp.com

HUSQVARNA SERVICE CENTERS USA

CORONA AREA SERVICE CENTER

520 East Rincon St., Ste. 101 Corona, CA 92879
 Office: 951-893-4415 Hours: 8:00 a.m. - 4:30 p.m.

CHICAGO AREA SERVICE CENTER

180 Stanley St. Elk Grove Village, IL 60007
 Office : 847-378-1330 Hours: 7:30 a.m. - 4:00 p.m.

DALLAS SERVICE CENTER

2933 Eisenhower St., Ste. 160 Carrollton, TX 75007
 Office: 214-351-9990 Hours: 7:00 a.m. - 4:30 p.m.

OLATHE SERVICE CENTER

17400 West 119th Street Olathe, KS 66061
 Office: 913-928-1226 Hours: 7:00 a.m. - 3:30 p.m.

NEW HAVEN SERVICE CENTER

6 Sycamore Way, Unit 2 Branford, CT 06405
 Office: 203-433-3491 Hours: 8:00 a.m. - 4:00 p.m.

ATLANTA SERVICE CENTER

6650 Oak Ridge Commerce Way Austell, GA 30168
 Office: 770-948-0658 Hours: 8:00 a.m. - 5:00 p.m.

QUERETARO SERVICE CENTER

Carretera Querétaro - San Luis Potosí 16368 Int. 12
 Santa Rosa Jaurequi, Querétaro CP. 76220
 P: 52 442-294-5244 Horario: 8:30 a.m. - 5:30 p.m.

CUSTOMER SERVICE & TECH SERVICE CONTACT INFO

USA Customer Service: 800-288-5040 Technical Service: 800-365-5040



2077 Bond St. North Bay, ON P1B 4V7
 Phone: 800-461-9589 Fax: 800-825-0028
 Web: www.husqvarnacp.ca

HUSQVARNA SERVICE CENTERS CANADA

QUEBEC SERVICE CENTER

9430 Rte Trans Canadienne St. Laurent,
 Quebec H4S 1R7
 P: 514-335-9769
 Hours: 8:00 a.m. - 5:00 p.m.

BRITISH COLUMBIA SERVICE CENTER

1515 Broadway St., Unit 504 Port Coquitlam,
 British Columbia V3C 6M2
 P: 604-944-0532
 Hours: 8:00 a.m. - 5:00 p.m.

ONTARIO SERVICE CENTER

850 Matheson Blvd. Mississauga,
 Ontario L5V 0B4
 P: 905-817-8012
 Hours: 8:00 a.m. - 5:00 p.m.

ALBERTA SERVICE CENTER

2520 23rd Avenue NE, Unit 15, Calgary,
 Alberta T2E 8L2
 P: 403-717-0716
 Hours: 7:30 a.m. - 4:30 p.m.

CUSTOMER SERVICE & TECH SERVICE CONTACT INFO

Canada Customer and Technical Services: 800-461-9589



Husqvarna[®]

HUSQVARNA CONSTRUCTION PRODUCTS

www.husqvarnacp.com

www.husqvarnacp.ca