



Husqvarna[®]

**OSHA SILICA
REGULATION GUIDE**

Flat Saws/Soff-Cut[®]



What is silica dust?

Silica dust is what is produced when concrete, bricks, blocks, etc are cut, and while it might seem harmless, it contains crystalline silica. The existence of crystalline silica and the hazards it can cause to a worker's body – silicosis, chronic obstructive pulmonary disease and kidney disease – has been known for decades. That is why Husqvarna Construction Products has been developing solutions to control dust for decades.

Since OSHA released the final ruling on crystalline silica exposure on March 24, 2016, how to control this dust has been a major concern for contractors. Mostly because the ruling places a lot of weight on the contractor's shoulders, but Husqvarna is here to support you with information and products to assist with compliance.

We always work towards finding the best solution for our customers – from both an efficiency standpoint and from a worker's view. OSHA has been working on a final ruling for the past several years, and since the first ruling on silica exposure Husqvarna Construction Products has been working to develop ways to suppress the crystalline silica and keep workers more safe.

This document will help guide you through how our products will help meet and/or exceed the OSHA rules, keeping you in compliance.

For more information on OSHA
silica exposure guidelines visit:

<https://www.osha.gov/silica/>



START DATE: September 23, 2017

The final OSHA ruling revises the amount of crystalline silica a worker should be exposed to. The key takeaways of the ruling include:

- The permissible exposure limit will be set at 50 micrograms per cubic meter of air, averaged over an eight hour shift.
- ***Employers will be required to take measures to control silica, either through using water, dust collection systems, ventilation or providing respirators.*** Employers will also be required to limit the amount of time a worker can be exposed to hazardous environments, write an exposure control plan, designate a competent person, offer medical exams to highly exposed workers and train workers on the risks and how to avoid silica dust.

Penalty Amounts Adjusted for Inflation as of January 13, 2017

TYPE OF VIOLATION	MAXIMUM PENALTY
SERIOUS/OTHER THAN SERIOUS POSTING REQUIREMENTS	\$12,675.00 per violation
FAILURE TO ABATE	\$12,675.00 per day beyond abatement date
WILLFUL OR REPEATED VIOLATIONS	\$126,749.00 per violation

Penalty amounts listed above may change.
For more information on OSHA penalty guidelines visit:

<https://www.osha.gov/penalties/>

What does OSHA require from you?

FROM TABLE 1 §29 CFR 1926.1153			
Equipment/ Task	Engineering & work practice control method	Required respiratory protection and minimum Assigned protection factor (apf)	
		Less than or equal to 4 hours/shift	Greater than 4 hours/ shift
(iv) Walk- behind saws	Use saw equipped with integrated water delivery system that continuously feeds water to the blade Operate and maintain tool in accordance with manufacturer's instructions to minimize dust emissions. When used outdoors When used indoors or in an enclosed area	None APF 10	None APF 10

How Husqvarna can help you meet requirements:

RECOMMENDED FLAT SAW EQUIPMENT

With our complete line-up of top-quality machines, ranging from big, powerful road saws with Tier 4/Stage IIIB compliant diesel engines to small agile flat saws with reliable gasoline engines, we can offer a suitable machine for every job.

Walk-Behind Equipment

OSHA Compliance Cross Reference

Equipment	Models	OSHA TABLE 1 Recommended Dust Suppression	Feature	Recommended Accessories or Equipment	Additional Dust Control
FLAT SAWS	FS 309, FS 413	Water	Water attachment and adjustable valve for pressurized water supply	Optional on-board water tank for gravity fed water	W 70 P Wet/Slurry Vac
	FS 400, FS 513, FS 520, FS 524	Water	Water attachment and adjustable valve for pressurized water supply Standard on-board water tank for gravity fed water		W 70 P Wet/Slurry Vac
	FS 3500, FS 4600, FS 5000, FS 7000	Water	Water attachment and adjustable valve for pressurized water supply	Optional water pump kits for tank fed water supply	W 70 P Wet/Slurry Vac
SOFF-CUT	Soff-Cut 150 Soff-Cut 2000 Soff-Cut 4000 Soff-Cut 4200 Soff-Cut 5000	Water <i>(Soff-Cutting is not specifically addressed in Table 1 but would most closely be classified under flat sawing)</i>	Cutting is done while concrete is still wet enough to not produce dust. A water delivery system is not used.	S 26 dust extractor will still be recommended to clean resulting debris (dry broom sweeping is prohibited) Soff-Cut dust reducer shroud and adequate dust extractor Soff-Cut 150 use S 26 dust extractor Soff-Cut 2000, 2500 use S 36 dust extractor Soff-Cut 4000, 4200, 5000 use Soff-Cut 1000 vac or T 7500 dust extractor	Proper cutting in the Green Zone Dry cutting w/vac

*Additional engineering controls to reduce exposure:

Objective data testing for Soff-Cut® Ultra Early Entry™ sawing without water in "Green Zone™" (tested)

Objective data testing for Soff-Cut® Ultra Early Entry™ sawing without water and with gas vacuum (tested)

Objective data testing for Soff-Cut® Ultra Early Entry™ sawing without water and with propane vacuum (tested)

Husqvarna Walk-Behind Equipment

FLAT SAWS



FS 309



FS 400



FS 413



FS 513



FS 520



FS 524



FS 3500



FS 4600



FS 5000



FS 7000

SOFF-CUT



SOFF-CUT
150



SOFF-CUT
2000



SOFF-CUT
4000



SOFF-CUT
4200



SOFF-CUT
5000

ADDITIONAL DUST CONTROL



W 70 P



S 26



S 36

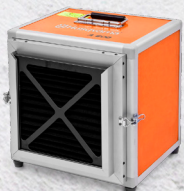


T 7500



SOFF-CUT
1000

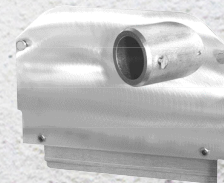
SUPPLEMENTARY DUST SUPPRESSION EQUIPMENT



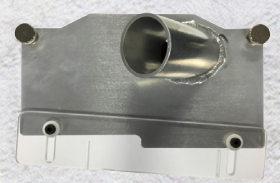
A 600



A 1200



3" DUST PORT
COVER



2" DUST PORT
COVER



17400 West 119th St. Olathe, KS 66061

Phone: 800-288-5040 Fax: 800-825-0028

Web: www.husqvarnacp.com

HUSQVARNA SERVICE CENTERS USA

CORONA AREA SERVICE CENTER

520 East Rincon St., Ste. 101 Corona, CA 92879

Office: 951-893-4415 Hours: 8:00 a.m. - 4:30 p.m.

CHICAGO AREA SERVICE CENTER

180 Stanley St. Elk Grove Village, IL 60007

Office: 847-378-1330 Hours: 7:30 a.m. - 4:00 p.m.

DALLAS SERVICE CENTER

2933 Eisenhower St., Ste. 160 Carrollton, TX 75007

Office: 214-351-9990 Hours: 7:00 a.m. - 4:30 p.m.

OLATHE SERVICE CENTER

17400 West 119th Street Olathe, KS 66061

Office: 913-928-1226 Hours: 7:00 a.m. - 3:30 p.m.

NEW HAVEN SERVICE CENTER

6 Sycamore Way, Unit 2 Branford, CT 06405

Office: 203-433-3491 Hours: 8:00 a.m. - 4:00 p.m.

ATLANTA SERVICE CENTER

6650 Oak Ridge Commerce Way Austell, GA 30168

Office: 770-948-0658 Hours: 8:00 a.m. - 5:00 p.m.

QUERETARO SERVICE CENTER

Carretera Querétaro - San Luis Potosí 16368 Int. 12

Santa Rosa Jaurequi, Querétaro CP. 76220

P: 52 442-294-5244 Horario: 8:30 a.m. - 5:30 p.m.

CUSTOMER SERVICE & TECH SERVICE CONTACT INFO

USA Customer Service: 800-288-5040

Technical Service: 800-365-5040



2077 Bond St. North Bay, ON P1B 4V7

Phone: 800-461-9589 Fax: 800-825-0028

Web: www.husqvarnacp.ca

HUSQVARNA SERVICE CENTERS CANADA

QUEBEC SERVICE CENTER

9430 Rte Trans Canadienne St. Laurent,

Quebec H4S 1R7

P: 514-335-9769

Hours: 8:00 a.m. - 5:00 p.m.

BRITISH COLUMBIA SERVICE CENTER

1515 Broadway St., Unit 504 Port Coquitlam,

British Columbia V3C 6M2

P: 604-944-0532

Hours: 8:00 a.m. - 5:00 p.m.

ONTARIO SERVICE CENTER

850 Matheson Blvd. Mississauga,

Ontario L5V 0B4

P: 905-817-8012

Hours: 8:00 a.m. - 5:00 p.m.

ALBERTA SERVICE CENTER

2520 23rd Avenue NE, Unit 15, Calgary,

Alberta T2E 8L2

P: 403-717-0716

Hours: 7:30 a.m. - 4:30 p.m.

CUSTOMER SERVICE & TECH SERVICE CONTACT INFO

Canada Customer and Technical Services: 800-461-9589



Husqvarna[®]

HUSQVARNA CONSTRUCTION PRODUCTS

www.husqvarnacp.com

www.husqvarnacp.ca