

SERVICE MANUAL EBE-500S 50Hz

VERSION 1.3

Index

Maintenance log	03
1. Spare parts	04
2. Maintenance box	13
Contact	



Inspection comments

Inspection before initial operation on:	_____
By:	_____
Date of initial operation:	_____
Serial number & Year of manufacture:	_____

Recurring inspections / Maintenance log

Date/hour counter	Findings	Repairs / Cleaning	Test on	By*

*competent person

1. Spare parts

Fig. 01

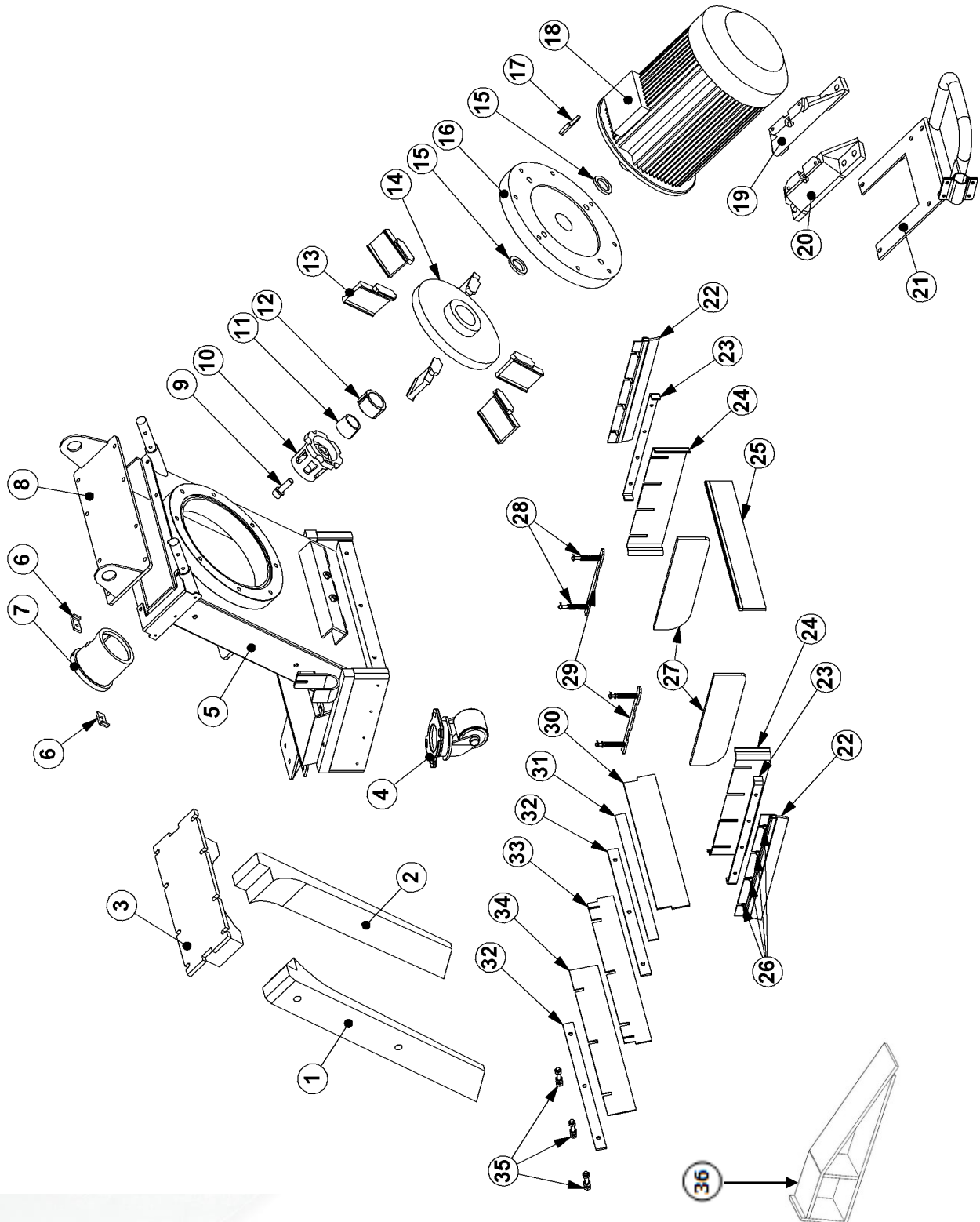




Fig. 01

Item	Blastrac PN	HQV PN	Description	Remarks	Qty.
1	500-1030	533142401	Liner LH		1
2	500-1035	533142801	Liner RH		1
3	500-1040	533128301	Top liner		1
4	500-2010-SEH	531495501	Front Wheel castor		1
5	500-9006-S	531480601	Blast housing cabinet		1
6	500-9041-SEVU	531485801	Control cage clamp		2
7	500-1010	533147101	Control cage		1
8	500-1115	531469701	Top liner cover		1
9	500-1245	533759801	Impeller bolt		1
10	600-1015	533264301	Impeller		1
11	222-2295	533644001	Taper lock bush		1
12	222-2265	533017101	Taper lock adapter		1
13	500-1005	533440901	Blades (set of 6)		1
14	500-1025	534340401	Blast wheel		1
15	500-1145-V	533464101	Oil seal		2
16	500-9007-SEVU	531486701	Motor adaption plate		1
17	E00963	533260601	Blast motor parallel key		1
18	500-3020-SHEV	533644101	Blast motor 18.5 kW		1
	500-3021-SHEV/35HP	534078201	Blast motor 35HP (22kW with mounted connector)	From serialnumber 1883E and up	1
19	500-3045-SEV/80	533448301	Motor foot right		1
20	500-3040-SEV/80	533388101	Motor foot left		1
21	500-9090-SE	531497201	Protection motor bracket		1
22	500-1050-S	533172301	Side brush (set of 2)		1
23	500-1061-SE	533351101	Side skirt fixing plate		2
24	500-1060-S	533373501	Side skirt (set of 2)		1
25	500-1045-S	533417901	Back brush		1
26			M6x25+washer+springlock washer		8
27	500-1020	533154301	Side seal (set of 2)		1
28	500-2030-SE	531469201	Side seal spring		4
29	500-1021-SE	533385201	Side seal spring plate		2
30	500-1052-SE	533352901	Front skirt inner		1
31	500-1057-SE	531481901	Front skirt fixing plate		1
32	500-1058-SE	533015601	Front locating plate inner/outer		2
33	500-1053-SE	533389801	Front skirt intermediate		1
34	500-1054-SE	533349201	Front skirt outer		1
35			Bolt M10x55+2x nut M10		3
36	500-1260-SE	533723501	Drive ramp		1

Fig. 02

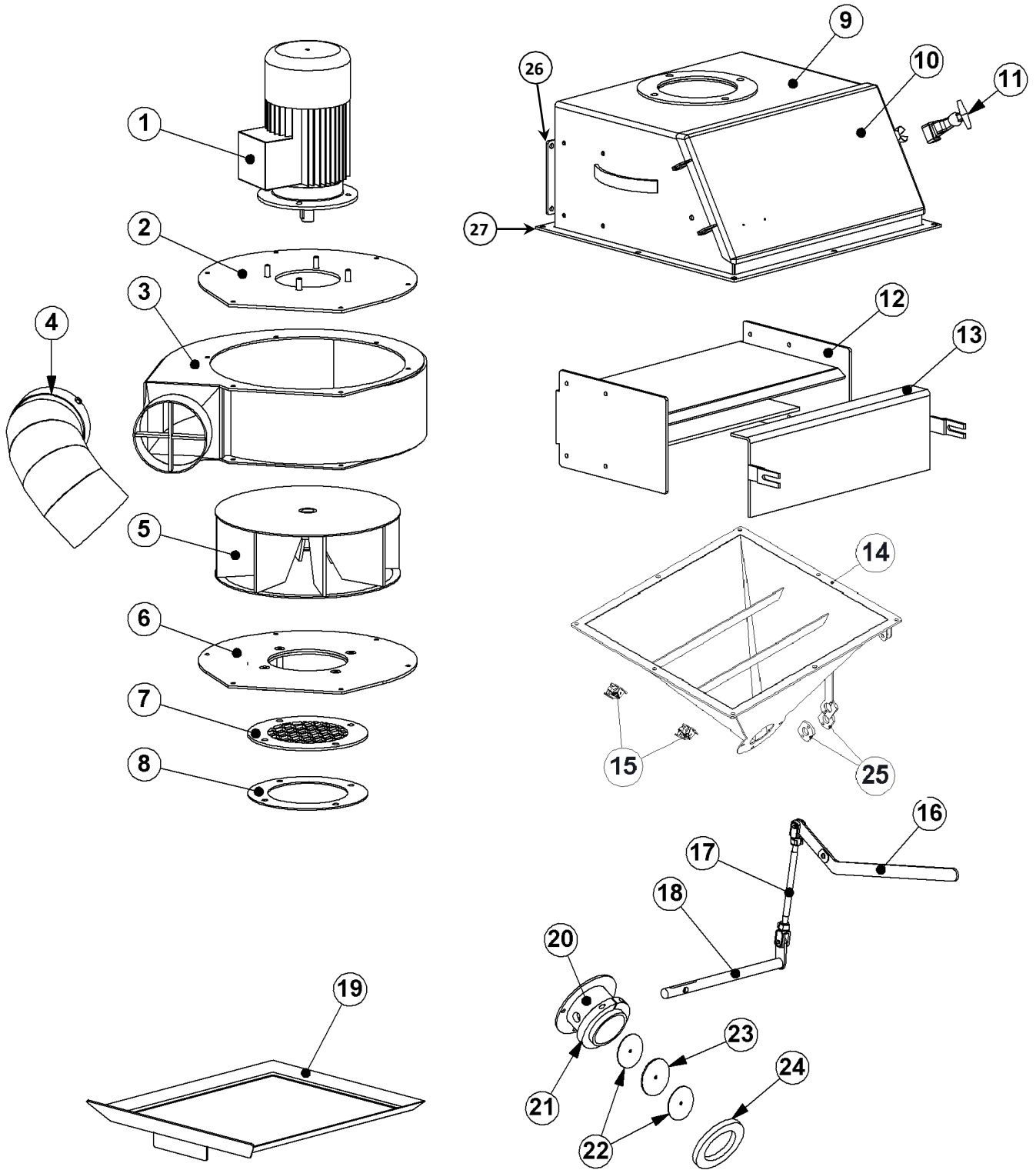
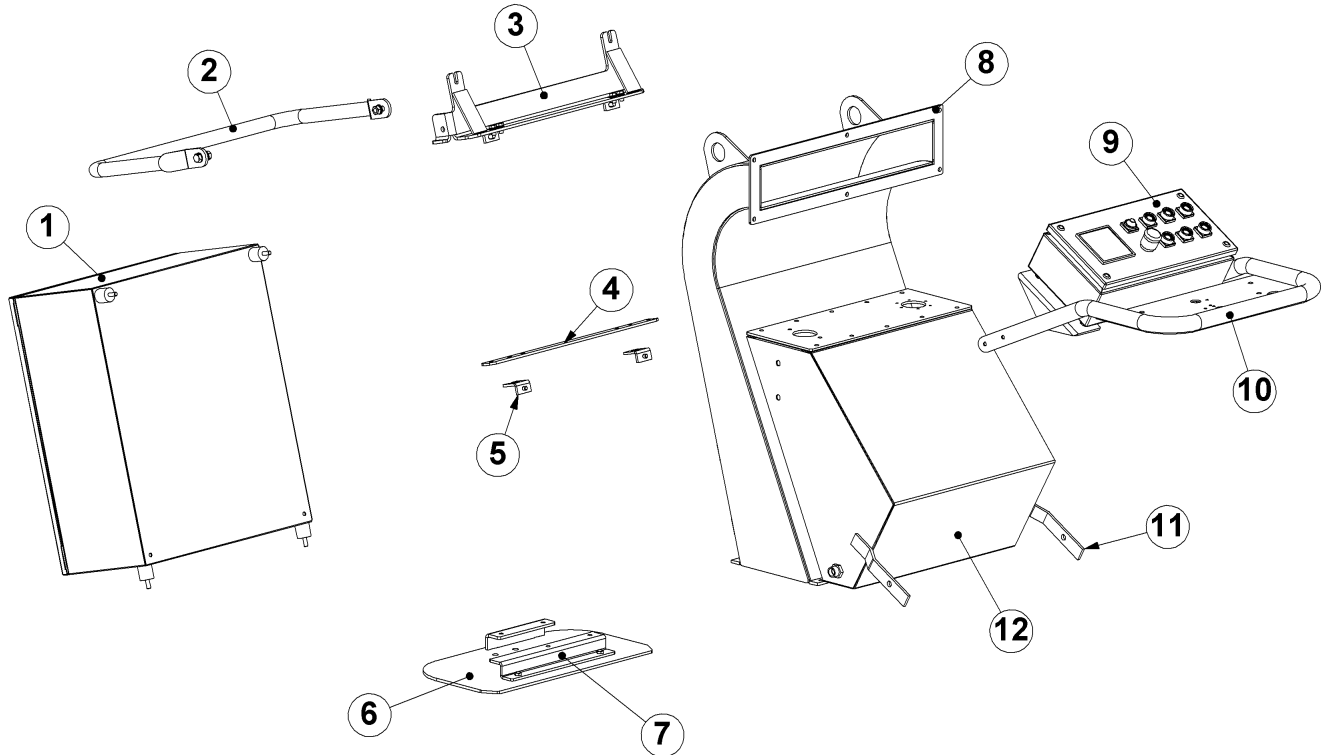


Fig. 02

Item	Blastrac PN	HQV PN	Description	Qty.
1	500-3055-SHEV	531490601	Fan motor 2.2 kW	1
2	500-9030	531479901	Fan housing plate (top)	1
3	500-1090	531466801	Fan housing	1
4	500-1120	531481001	Fan housing elbow	1
5	500-1085	533395101	Fan impeller	1
6	500-9025	531487301	Fan housing plate bottom	1
7	035-9035	533118801	Fan ring	1
8	035-1125	533011301	Fan housing seal	1
9	500-9120-SE	531479701	Separator housing	1
10	500-9119	531473801	Separator door	1
11	500-1195	531471201	Rubber latch assy	1
12	500-9118-SE	531468601	Baffle plates	1
13	500-9121-SE	531485001	Separator deflector	1
14	E00992	533497501	Abrasive storage hopper	1
15	001084	534391301	Clamp for separator tray	2
16	500-9112-SE	531479501	Shot valve handle	1
17	500-1069-SE	533144101	Shot lever shaft complete	1
18	500-2015-SE	533431801	Shot valve axle	1
19	E00993	533565301	Hopper tray	1
20	600-9240	531493801	Shot valve axle housing	1
21	E04059	533427701	Clamp adjusting ring inc. bolt	1
22	500-1071	531489501	Shotvalve inner (steel)	2
23	500-1070	534837401	Shotvalve inner (rubber)	1
24	500-1065-SE	533440701	Feed spout rubber	1
25	E06488	533214901	Adjusting plates	2
26*	E00395	533348901	Separator seal felt	1
27*	E00393	533265901	Hopper seal felt	1

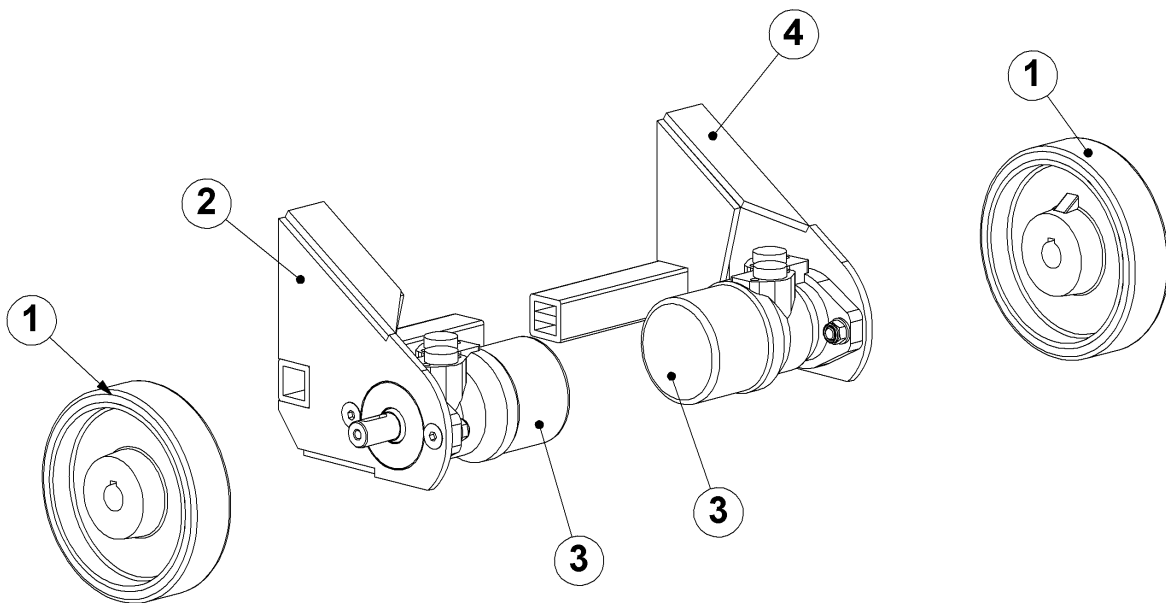
* Not shown in picture Fig.02

Fig. 03



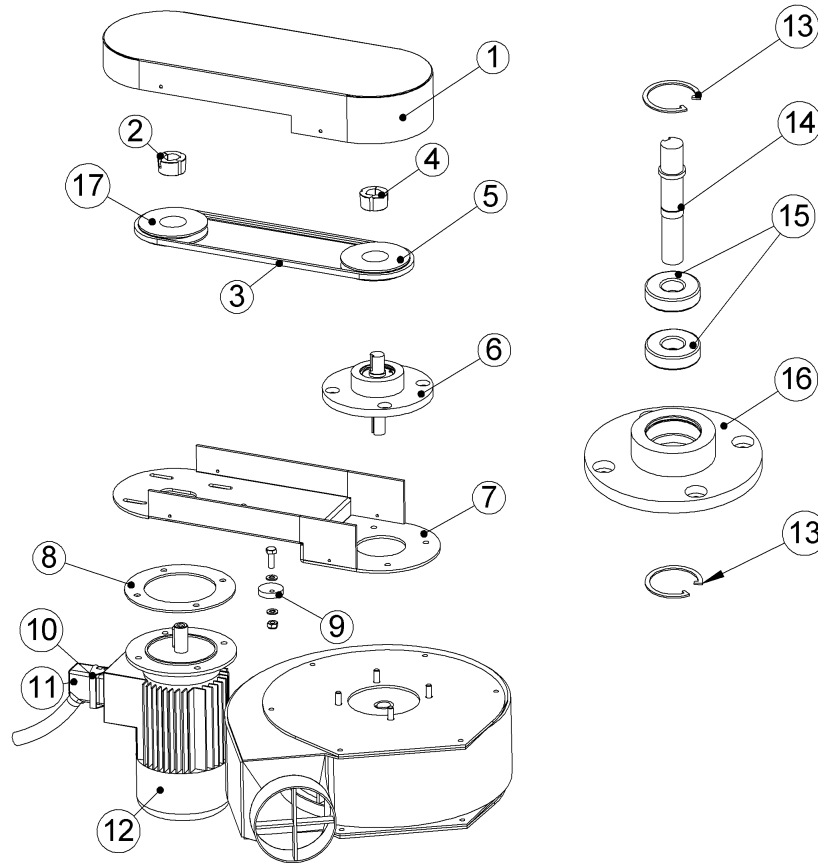
Item	Blastrac PN	HQV PN	Description	Remarks	Qty.
1	500-9111-1	534545501	Electrobox complete (50Hz)	From serial number 1883E and up	1
	500-9111-2	534547901	Electrobox complete MKII (50Hz)		1
2	E09294	535260601	Protection handle 500S 50Hz		1
3	E09293	535188201	Top bracket 500S 50Hz		1
4	E09577	535224501	Mounting strip for 500S 50Hz		1
5	E03725	535232601	Rebound bracket		2
6	E03813	533017301	Base plate hydromotor		1
7	E03814	531487901	Motor support		1
8	E03723	531477101	Rebound		1
9	500-3404-SE	533017702	Remote control box		1
10	500-9085-S	531476201	Handle complete		1
11	E03699	533015901	Oil tank fixing tank		2
12	500-9080-S	535198601	Hydraulic tank		1

Fig. 04



Item	Blastrac PN	HQV PN	Description	Qty.
1	500-2425-S	531467501	Drive wheel	2
2	E03807	531864001	Left Wheel bracket	1
3	500-4005-SU	531490401	Hydraulic drive motor	1
4	E03811	533002001	Right Wheel bracket	1

Fig. 05



Item	Blastrac PN	HQV PN	Description	Qty.
1	E00701	534322901	Belt guard cover	1
2	222-2270	534892401	Taper lock bush	1
3	500-2465-SE	533834301	V-belt	1
4	222-2301-V	531490901	Taper lock bush	1
5	E00622	534892701	V-belt pulley (50Hz)	2
6	E00706	534318901	Bearing unit complete	1
7	E00700	534322701	Belt guard bottom plate	1
8	E00707	534574301	Filling plate fan motor	1
9	E00704	534518401	Eccentric sleeve fan adapter	1
10	RIG-3629-CDF	533571701	Connector housing	1
11	RIG-3630-CDF	533767601	Interior bush	1
12	500-3055-SHEV-IE2	531490601	Fan motor	1
13	E00951	533292201	Inner circlip	2
14	E00703	534833201	Shaft fan adapter	1
15	E00705	533090501	Bearing fan adapter	2
16	E00702	534315001	Bearing house fan adapter	1
17	491824	534892601	V-belt pulley (50Hz)	1

Fig. 06

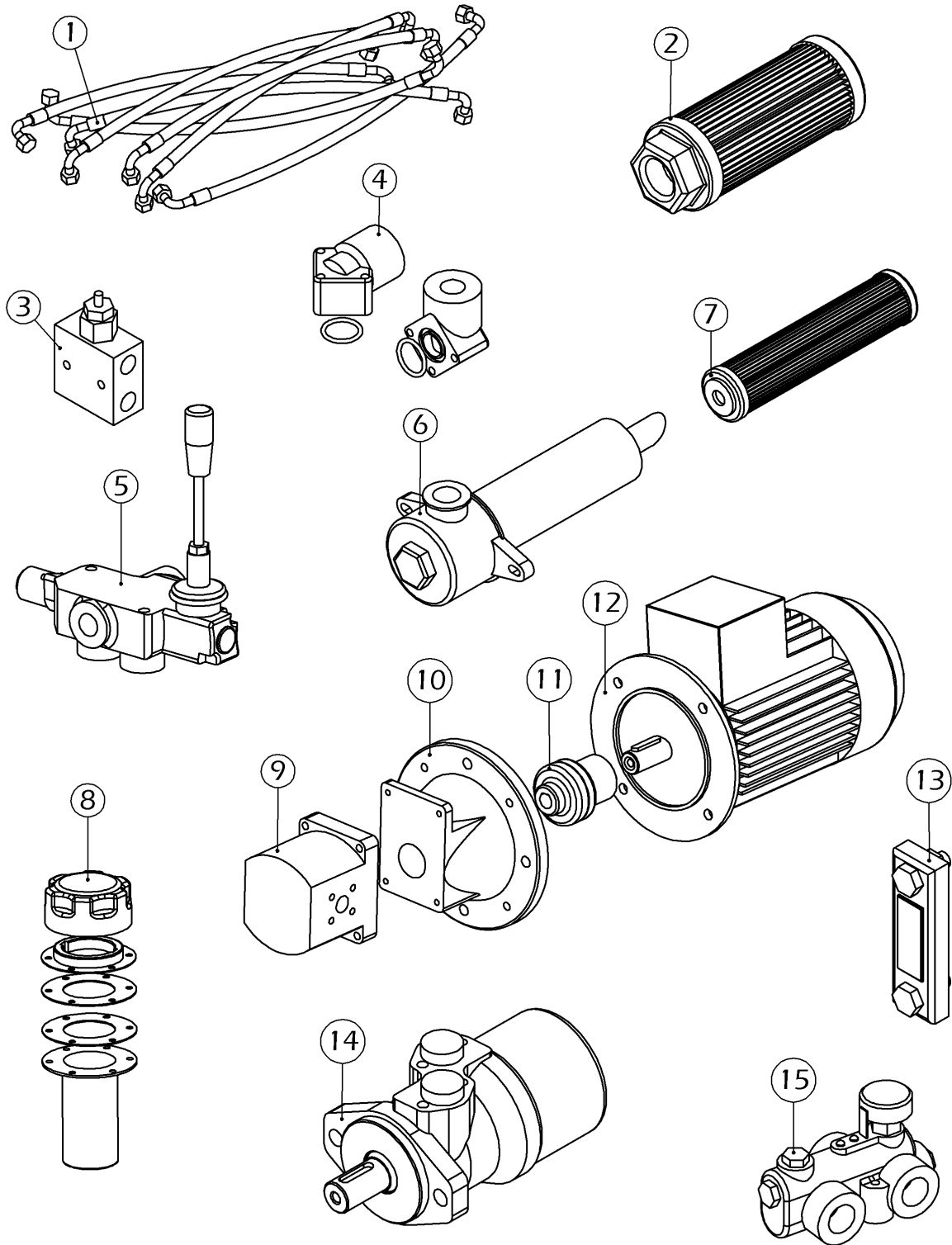
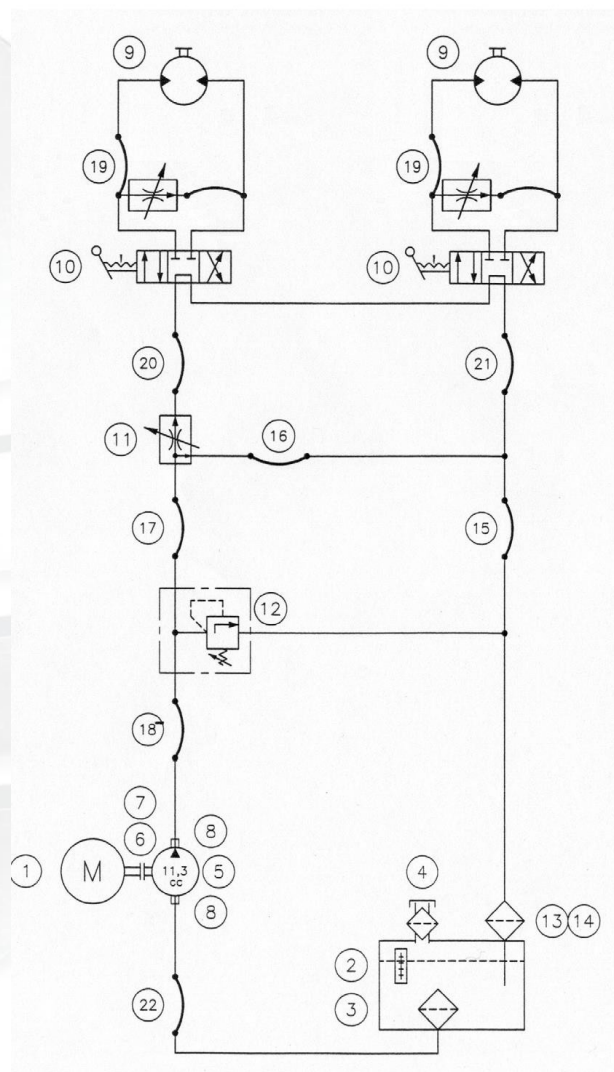


Fig. 06

Item	Blastrac PN	HQV PN	Description	Qty.
1	500-4101-S	534633801	Hydraulic hose set	1
2	035-4040	534874701	Suction filter	1
3	035-4175-S	533167101	Pressure relief valve	1
4	500-4115-SV	-	Flange coupling	2
5	035-4105-S	534033201	Hydraulic directional control valve	2
6	035-4173-S	533197501	Return filter housing	1
7	035-4174-S	533477201	Return filter element	1
8	500-3085-S	531476301	Filling venting filter	1
9	500-4173-S	535351401	Gear pump	1
10	500-4114-S	533015401	Pump bracket (aluminium)	1
11	500-4116-S	534583301	Flexible coupling (aluminium)	1
12	500-3060-S	534032701	Pump motor 2,2kW	1
13	350-4172-S	533872801	Level gauge with thermo	1
14	500-4005-SU	531490401	Hydraulic drive motor	2
15	500-4030-S	534586801	Flow control valve	1

EBE 500 S - Hydraulic circuit



2. Maintenance box E07226

Item	Blastrac PN	HQV PN	Description	Qty.
1	E07226_1	534701301	Maintenance box 500E/S (tools only)	1
2	E07226_2	534591101	Brass shaft ø20x500mm	1
3	500-1015	531458301	Impeller	1
4	500-1005	533440901	Blades (set of 6)	1
5	500-1010	533147101	Control cage	1
6	500-1245	533759801	M16X45 Impeller bolt DIN912	1
7	500-1045-S	533417901	Back brush	1
8	500-1060-S	533373501	Side skirt (set of 2)	2
9	500-1050-S	533172301	Side brush (set of 2)	2
10	500-1052-SE	533352901	Front skirt inner	1
11	500-1053-SE	533389801	Front skirt intermediate	1
12	500-1054-SE	533349201	Front skirt outer	1
13	500-1070	534837401	Shot valve insert (rubber)	1
14	500-1065-SE	533440701	Feed spout rubber	1



Headquarter

Blastrac The Netherlands

Utrechthaven 12
 NL – 3433 PN Nieuwegein
 Tel – 0031 30 601 88 66
 Fax – 0031 30 601 83 33
 Info@blastrac.nl

Blastrac Poland

Golina, Dworcowa 47a
 PL – 63-200 Jarocin
 Tel – 0048 627 40 41 50
 Fax – 0048 627 40 41 51
 Info@blastrac.pl

Blastrac Italy

S.S. 10 Padana Inferiore, 41
 IT – 29012 Caorso (PC)
 Tel – 0039 0523 81 42 41
 Fax – 0039 0523 81 42 45
 Info@blastrac.it

Blastrac United Kingdom

Unit 2, Outgang Lane, Dinnington
 Sheffield, South Yorkshire
 GB – S25 3QY, England
 Tel – 0044 1909 56 91 18
 Fax – 0044 1909 56 75 70
 Info@blastrac.co.uk

Blastrac Germany

Richard Byrd Straße 15
 D – 50829 Köln (Ossendorf)
 Tel – 0049 221 70 90 32 0
 Fax – 0049 221 70 90 32 22
 Info@blastrac.de

Blastrac Spain

Calle Copernico, 16
 Nave 2
 E – 28820 Coslada
 Tel – 0034 91 660 10 65
 Fax – 0034 91 672 72 11
 Info@blastrac.com.es

Blastrac France (ZI)

29, Avenue des Temps Modernes
 F – 86360 Chasseneuil du Poitou
 Tel – 0033 549 00 49 20
 Fax – 0033 549 00 49 21
 Info@blastrac.fr

Blastrac Ukraine

Nezalezhnosti 14, of. 21
 UA – 07400 Brovary
 Tel – 0038 44 222 51 28
 Fax – 0038 44 277 98 29
 Info@blastrac.com.ua