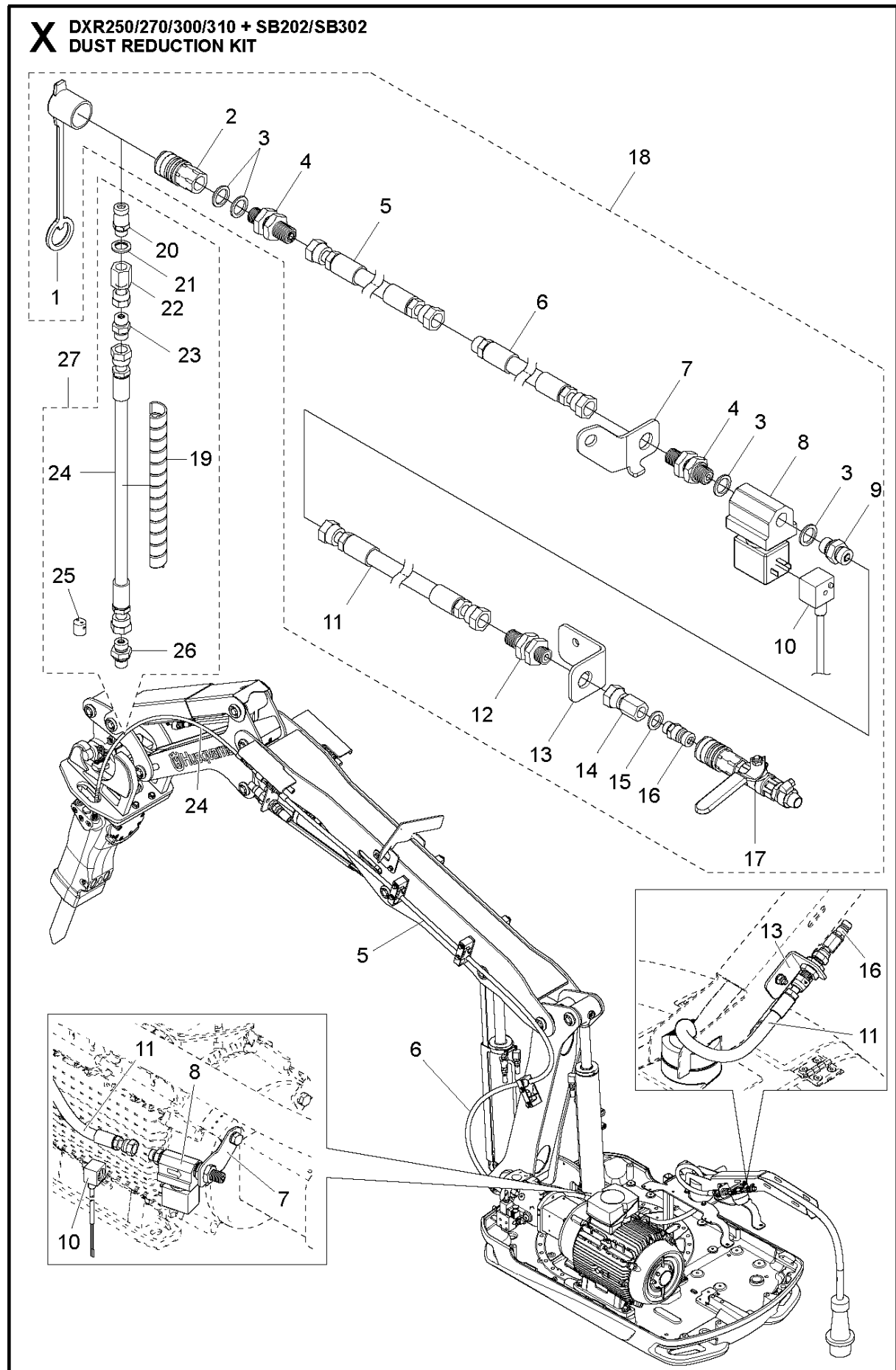




SPARE PARTS LIST

ACCESSORIES AND TOOLS

DUST REDUCTION KIT DXR2XX&3XX +
SB202&SB302, 2017-03



ACCESSORIES

DUST REDUCTION KIT DXR2XX&3XX + SB202&SB302, 2017-03

Ref	Part No	Description	Remark	QTY	KIT
1	589 79 45-01	DUST COVER		1	18
2	531 11 80-03	HYDRAULIC COUPLING FEMA		1	18
3	501 72 09-02	WASHER		4	18
4	576 41 20-01	ADAPTER		2	18
5	585 54 22-03	HOSE ASSY	For DXR250 & 270	1	18
5	585 54 22-02	HOSE ASSY	For DXR300	1	18
5	585 54 22-07	HOSE ASSY	For DXR310	1	18
6	588 95 87-03	HOSE ASSY		1	18
7	582 82 05-01	BRACKET		1	18
8	582 78 01-01	VALVE		1	18
9	589 01 54-01	ADAPTER		1	18
10	576 61 44-02	CABLE		1	18
11	589 34 84-01	HOSE ASSY		1	18
12	589 00 91-01	ADAPTER		1	18
13	589 40 32-01	BRACKET		1	18
14	582 90 56-01	ADAPTER		1	18
15	501 72 09-01	WASHER		1	18
16	531 11 83-54	NIPPLE		1	18
17	505 42 42-01	VALVE ASSY		1	18
18	583 80 71-02	DUST REDUCTION	For DXR250 & 270	1	
18	583 80 71-03	DUST REDUCTION	For DXR300	1	
18	583 80 71-04	DUST REDUCTION	For DXR310	1	
19	501 73 96-02	WEAR PROTECTION		1	27
20	531 11 83-54	NIPPLE		1	27
21	501 72 09-01	WASHER		1	27
22	582 03 50-01	ADAPTER		1	27
23	582 77 99-01	ADAPTER		1	27
24	585 48 42-11	HOSE ASSY		1	27
25	582 78 00-01	NOZZLE		2	27
26	589 01 09-01	ADAPTER		1	27
27	583 80 72-02	DUST REDUCTION		1	