



GB

Operator's manual

Please read the operator's manual carefully and make sure you understand the instructions before using the machine.

ES

Manual de instrucciones

Lea detenidamente el manual de instrucciones y asegúrese de entender su contenido antes de utilizar la máquina.

DE

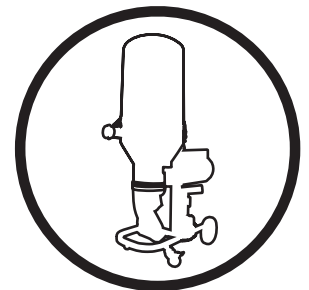
Bedienungsanweisung

Lesen Sie die Bedienungsanweisung sorgfältig durch und machen Sie sich mit dem Inhalt vertraut, bevor Sie das Gerät benutzen.

FR

Manuel d'utilisation

Lire attentivement et bien assimiler le manuel d'utilisation avant d'utiliser la machine.



GB ES DE FR

English

Contents

Key to symbols 4

Safety Instructions 5

Introduction 6

Transportation 6

Storage 6

What is what 7

Operation (dry use) 11

Operation (wet use) 12

Troubleshooting 13

Maintenance 14

Technical data 15

Key to symbols

Key to symbols

The symbols below are used on the machine and in this Operator's Manual. It is important that the user understands the significance of these in order to work with the machine safely.



Please read the operator's manual carefully and make sure you understand the instructions before using the machine.



WARNING! Dust forms when grinding which can cause injuries if inhaled. Use an approved breathing mask. Always provide for good ventilation.



Always wear:

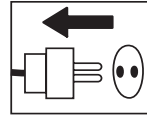
- Approved protective helmet
- Approved hearing protection
- Protective goggles or a visor.
- Dust forms when grinding, which can cause injuries if inhaled. Use dust mask.



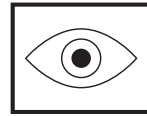
Always wear sturdy non-slip boots with steel toe-caps.



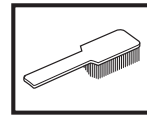
Always wear approved protective gloves.



Inspection and/or maintenance should be carried out with the motor switched off and the plug disconnected.



Visual check.



Regular cleaning is required.



This product is in accordance with applicable EC directives.

Safety Instructions



WARNING

Under no circumstances may the machine be started without observing the safety instructions. Should the user fail to comply with these, Husqvarna Construction Products Sweden AB or its representatives are free from all liability both directly and indirectly. Read through these operating instructions and make sure that you understand the contents before starting to use the machine. Should you, after reading these safety instructions, still feel uncertain about the safety risks involved you must not use the machine, please contact your dealer for more information.

- Please read the operator's manual carefully.
- Only qualified staff should be allowed to operate machinery.
- Never use a machine that is faulty. Carry out the checks, maintenance and service instructions described in this manual. All repairs not covered in this manual must be performed by a repairer nominated by either the manufacturer or distributor.
- Always wear personal safety equipment such as sturdy non-slip boots, ear protection, dust mask and approved eye protection.
- The machine should not be used in areas where potential for fire or explosions exist.
- The machine should not be started without the dust collection bag attached.
- Never use the machine if you are tired, if you have drunk alcohol, or if you are taking medication that could affect your vision, your judgement or your co-ordination.
- Never use a machine that has been modified in any way from its original specification.
- Be on your guard for electrical shocks. Avoid having body contact with lightning-conductors/metal in the ground.
- Never drag the machine by means of the cord and never pull out the plug by pulling the cord. Keep all cords and extension cords away from water, oil and sharp edges.
- Make sure the cord is not pinched in doors, fences or the like.

- Check that the cord and extension cord are intact and in good condition. Never use the machine if the cord is damaged, hand it in to an authorized service workshop for repair.
- Do not use a rolled up extension cord.
- The machine should be connected to an earthed outlet socket.
- Check that the mains voltage corresponds with that stated on the rating plate on the machine.
- Ensure the cord is behind you when you start to use the machine so that the cord will not be damaged.

At no time should lifting of machinery be attempted without mechanical means such as a hoist or fork lift.



WARNING!

Overexposure to vibration can lead to circulatory damage or nerve damage in people who have impaired circulation. Contact your doctor if you experience symptoms of overexposure to vibration. These symptoms include numbness, loss of feeling, tingling, pricking, pain, loss of strength, changes in skin colour or condition. These symptoms normally appear in the fingers, hands or wrists.

Introduction

The Husqvarna DC 3300 dust extraction/vacuum unit is designed for wet or dry suction of concrete dust and liquid slurry.

This manual covers the Husqvarna DC 3300 dust collector/ vacuum unit. It is extremely important all users be familiar with the contents of this manual before commencing operation of either machine. Failure to do so may result in damage to machinery or expose operator to unnecessary dangers.



IMPORTANT

Only staff that have received the necessary education, both practically and theoretically concerning their usage should operate the machinery.

Transportation

When in transportation, it is important to ensure the unit is properly secured at all times. Machinery should be transported under cover where possible, unexposed to natural elements – in particular rain and snow. Protect the unit from water damage.

It is recommended that machinery be transported upright where possible, especially when transported when uncovered.

It is highly recommended that a dust collection bag be fitted to the machine at all times whether in use or transportation.

Storage

The machine should always be stored in a dry and warm place when not in use to prevent internal condensation inside.

What is what



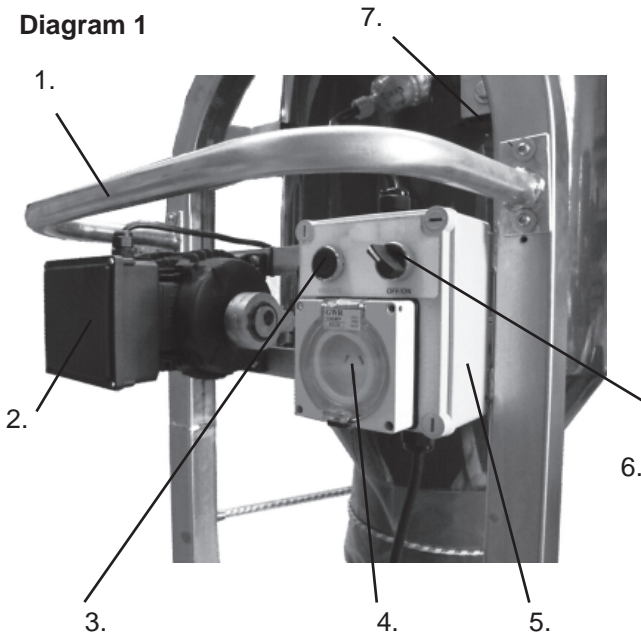
What is what

1. Vacuum motor housing & secondary filter housing
2. Large toggle latch
3. Inlet/hose attachment
4. Dust collection bag
5. Front castor wheel
6. Rear wheel

7. Elastic strap
8. Collection cone
9. Filter shaker motor
10. Primary filter housing
11. Chassis/frame

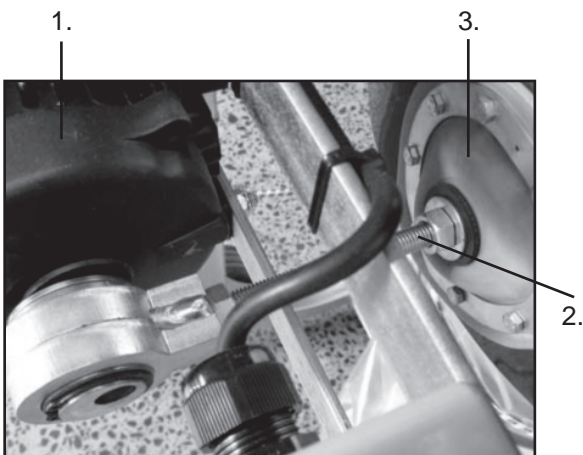
What is what

Diagram 1



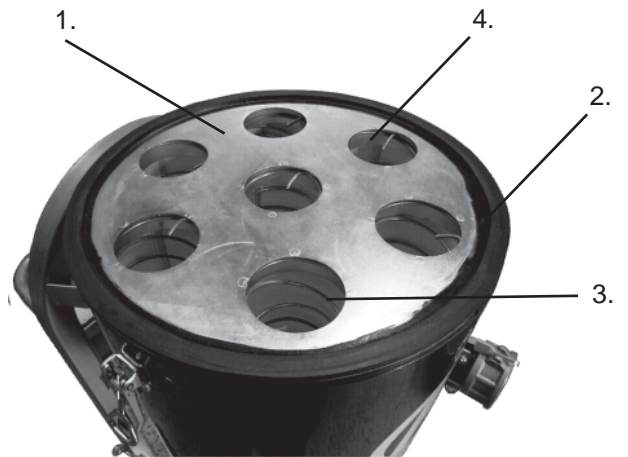
1. Rear handle
2. Filter shaker motor
3. Filter shaker control
4. Power outlet (USA only)
5. Control box
6. Stop/run switch
7. Accessory Power point

Diagram 2



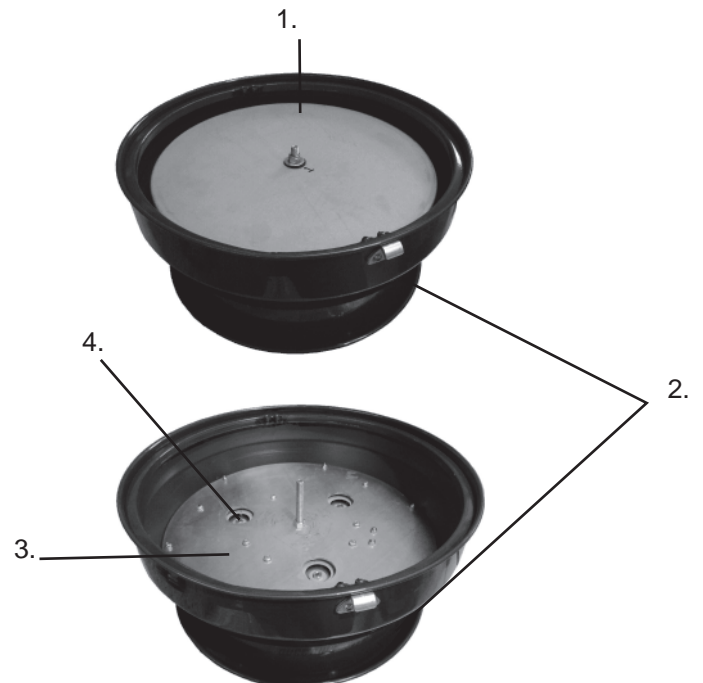
1. Filter shaker motor
2. Filter shaker rod
3. Diaphragm/seal

Diagram 3



1. Filter sock platform
2. Filter sock platform rubber seal
3. Filter coil/spring
4. Filter sock

Diagram 4



1. Micro filter
2. Vacuum motor housing & secondary filter housing
3. Vacuum motor mounting platform
4. Vacuum motor

What is what

Diagram 5

Dust flap closed

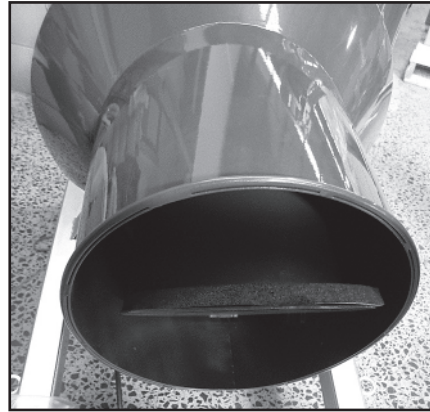
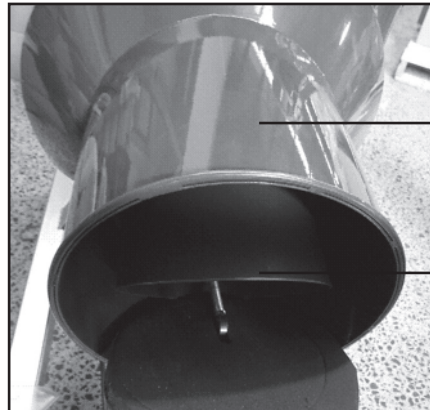


Diagram 5

Diagram 6

Dust flap open



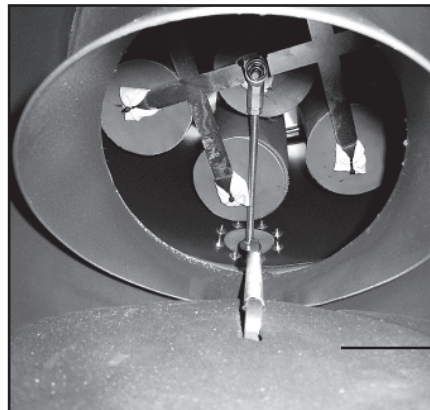
Collection cone

Spring

Diagram 6

Diagram 7

Collection cone

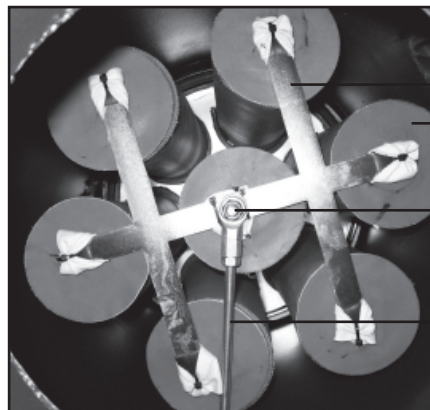


Dust flap open

Diagram 7

Diagram 8

1. Filter sock rack
2. Attachment nut
3. Filter shaker rod
4. Primary filter (sock)



1.

4.

2.

3.

Diagram 8

What is what

Diagram 9

Filter sock platform



Filter seal
- inner

Diagram 9

Diagram 10

1. Primary filter (sock)
2. Filter seal - outer
3. Filter clamp

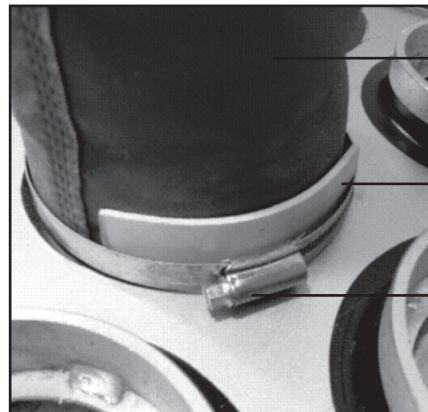


Diagram 10

Control Box

The control system consists of two switches:

1. Filter shaker activation button (Vibrate) - Shakes dust off sock filters
2. Vacuum On/Off - Turns machine off in OFF position and on in ON position



IMPORTANT!

Vibration of filters should be performed when control is set in the OFF position. If performed when vacuum is still on, most of the dust will stay stuck to filter socks.



1.

2.

Control box

Operation (dry use)

Operation (dry use)



Setting up

1. Position the vacuum in the working area.
2. Ensure dust collection bag is fitted to collection cone.
3. Check vacuum hose is fitted to inlet.
4. Plug vacuum into power supply and switch on power supply.

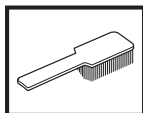


IMPORTANT!

Ensure vacuum is set to OFF position prior to turning on power supply.

5. Press VIBRATE button for 5 seconds to make sure filter socks are clean.
6. Machine is now ready for operation.

Cleaning the primary filters



After every 10-20 minutes of operation, the primary filters will need cleaning as dust will buildup on the inside of the filter socks. To remove dust build-up from filter socks, please do the following:

1. Switch the machine to the off position.
2. Press VIBRATE button for 5 seconds to make sure filter socks are clean.

Changing the dust bags.

Once the dust bag has collected around 20 kg of dust, to avoid lifting hazards caused by overfilling of dust bags, the dust bag should be changed.

1. Clear the primary filters of dust as outlined previously and agitate bag so that dust settles in the bottom of the bag.
2. Switch the machine back into ON position (you will notice the air is sucked from the plastic bag).
3. Tie bag off below the collection cone using a cable tie or other bag tie.
4. Release elastic strap and remove sealed bag.



IMPORTANT!

Use extreme caution when releasing and re-attaching elastic strap.

5. Using elastic strap, attach new empty plastic bag (you will notice the air is sucked from the plastic bag).
6. Machine is now ready to be used for duct collection again.



IMPORTANT!

It is important to keep vacuum running during the bag changing process. This will keep the valve in the collection cone closed ensuring no dust will drop out from within the collection cone when bag changing is being performed.

This method will greatly reduce operator exposure to fine dust particles when using the equipment. It is strongly advisable that all operators use a dust mask/respirator when changing dust bags or performing maintenance on the machine.

Operation (wet use)



The Husqvarna DC 3300 can also be used for collection of wet materials such as slurry formed from the wet grinding process.

In order to use the machine for wet collection, simply remove the Primary Filter Socks from the unit.

1. Remove attachment nut (see page 10) using 17 mm ring spanner or socket.
2. Remove vacuum motor and secondary filter housing.
3. Lift out primary filter socks.



IMPORTANT!

Do not try and remove primary filters without first removing attachment nut!

4. Replace vacuum motor and secondary filter housing.



IMPORTANT!

It is strongly advisable that all operators use a dust mask/respirator when removing primary filter socks from the machine.

Troubleshooting

Whilst every measure has been undertaken by the manufacturer to ensure smooth reliable operation of the machine, sometimes problems can arise.

The following possible problems may arise:

1. The machine will not run.

Ensure power connected to machine is on. If machine still will not run, remove cover from control box and test for presence of power supply at stop/run switch. If no power at stop/run switch, test power supply at power source. This should only be performed by a licensed electrician.

2. The machine makes a buzzing sound when switched to ON.

This often indicates a problem with one of the tree vacuum motors. One or more motors may need replacing.

3. The machine has very little suction.

This normally indicates one of the following possibilities:

- Primary filters are blocked - Solution: Vibrate filters.
- Secondary filter is blocked - Solution: If large amounts of dust is collecting in secondary filter it is most likely primary filters need replacing.
- One or more vacuum motors are not working - Solution: Check vacuum motors for correct function.
- One or more seals in the machine are not working properly - Solution: Check seals on the vacuum unit and replace if required.
- Flap on collection cone is not closing properly - Solution: Remove obstruction between flap and collection cone.

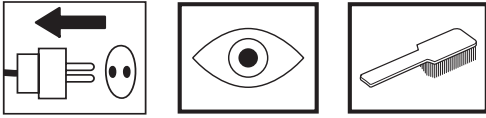
4. The machine is blowing dust out of the vacuum motor and secondary filter housing.

Normally this indicates one of the following:

- The secondary filter is not installed properly and dust is bypassing it. Ensure the seal on the end of the secondary filter is in good order and making proper contact with vacuum motor mounting plate when installed.
- The secondary filter needs replacing.

Maintenance

The following maintenance steps should be followed to maximise optimal performance and reliability of the machine:



Daily Inspection of Micro Filters

It is highly recommended that operators check dust levels between the filter sock platform and secondary filter on a daily basis. This will indicate the effectiveness of the primary filters. If there is dust building up in this area, it is more than likely due to one of the following reasons:

1. Small holes or perforations have developed in primary filters.
2. There is a problem with a seal in the primary filter/filter sock mounting platform assembly.

If when inspected, it is found that there is dust building up on the secondary filter, removal of the primary filters and checking for small holes or perforations in the filters is recommended.

Usually, small holes will begin to develop around the stitching of the filter media. If small holes are located, clean area around hole with either compressed air or vacuum. Once area is clean, the hole can be repaired with silicone sealant.

Generally speaking, with consistent use, the primary filters should be replaced approximately every 6 months. This will maintain good suction levels and reduce incidence of holes developing in the filters.

The secondary filter should be changed every 12 months. Made from a polyester filter media, the secondary filters can be washed out with water. Ensure they are fully dry prior to re-installation.

On re-installation of the secondary filter, ensure the seal is firmly pressed against the steel vacuum motor mounting plate.

EC-declaration of conformity

(Applies to Europe only)

Husqvarna Construction Products, SE-433 81 Göteborg, Sweden, tel: +46-31-949000, declares under sole responsibility that the Husqvarna DC3300 dating from 2007 serial numbers and onwards (the year is clearly stated on the rating plate, followed by the serial number), complies with the requirements of the COUNCIL'S DIRECTIVE:

- of June 22, 1998 "relating to machinery" 98/37/EC, annex IIA.
- of May 3, 1989 "relating to electromagnetic compatibility" 89/336/EEC, and applicable supplements.
- of December 12, 2006 "relating to electrical equipment" 2006/95/EC.

The following standards have been applied: EN 55014-1, EN55014-2, EN61000-3-2, EN61000-3-3.

The supplied machine conforms to the example that underwent EC type examination.

Göteborg 16 July 2007



Tim Van Der Veen, Development Manager



www.husqvarnacp.com

1150945-20



2007-08-23