

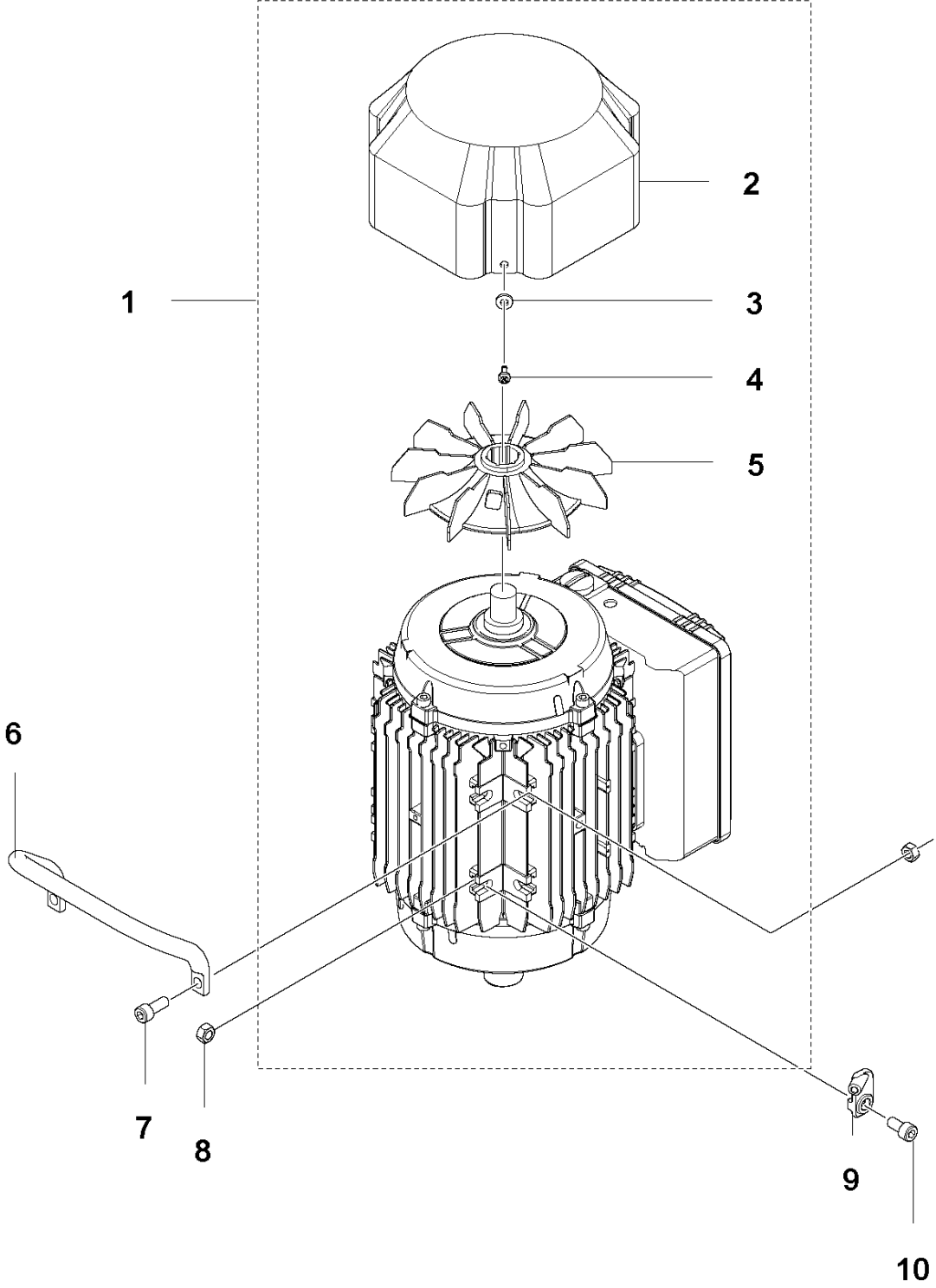


# SPARE PARTS LIST

SURFACE PREPARATION EQUIPMENT

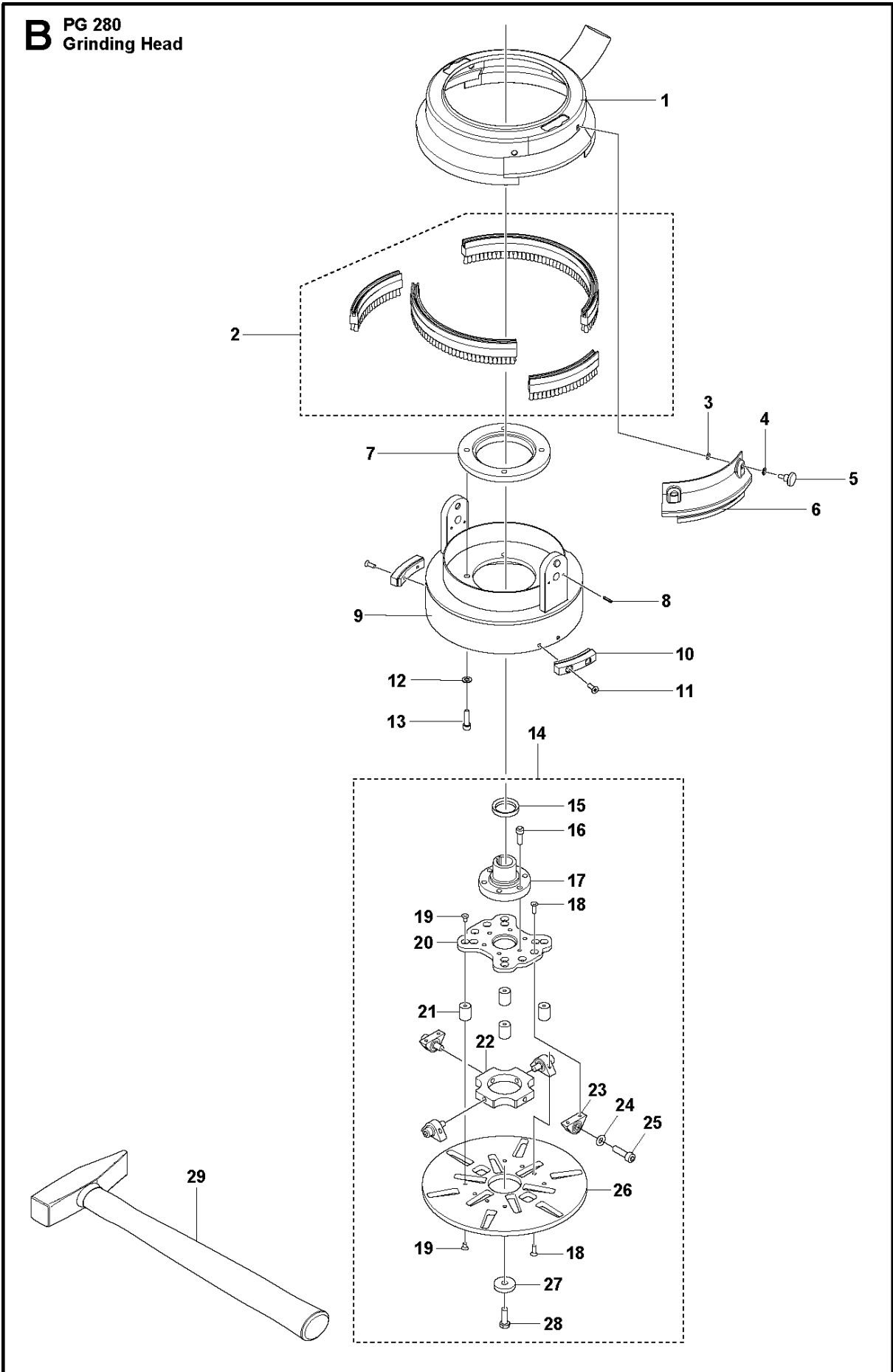
PG 280, 2018-02

**A** PG 280  
Motor 1-Phase

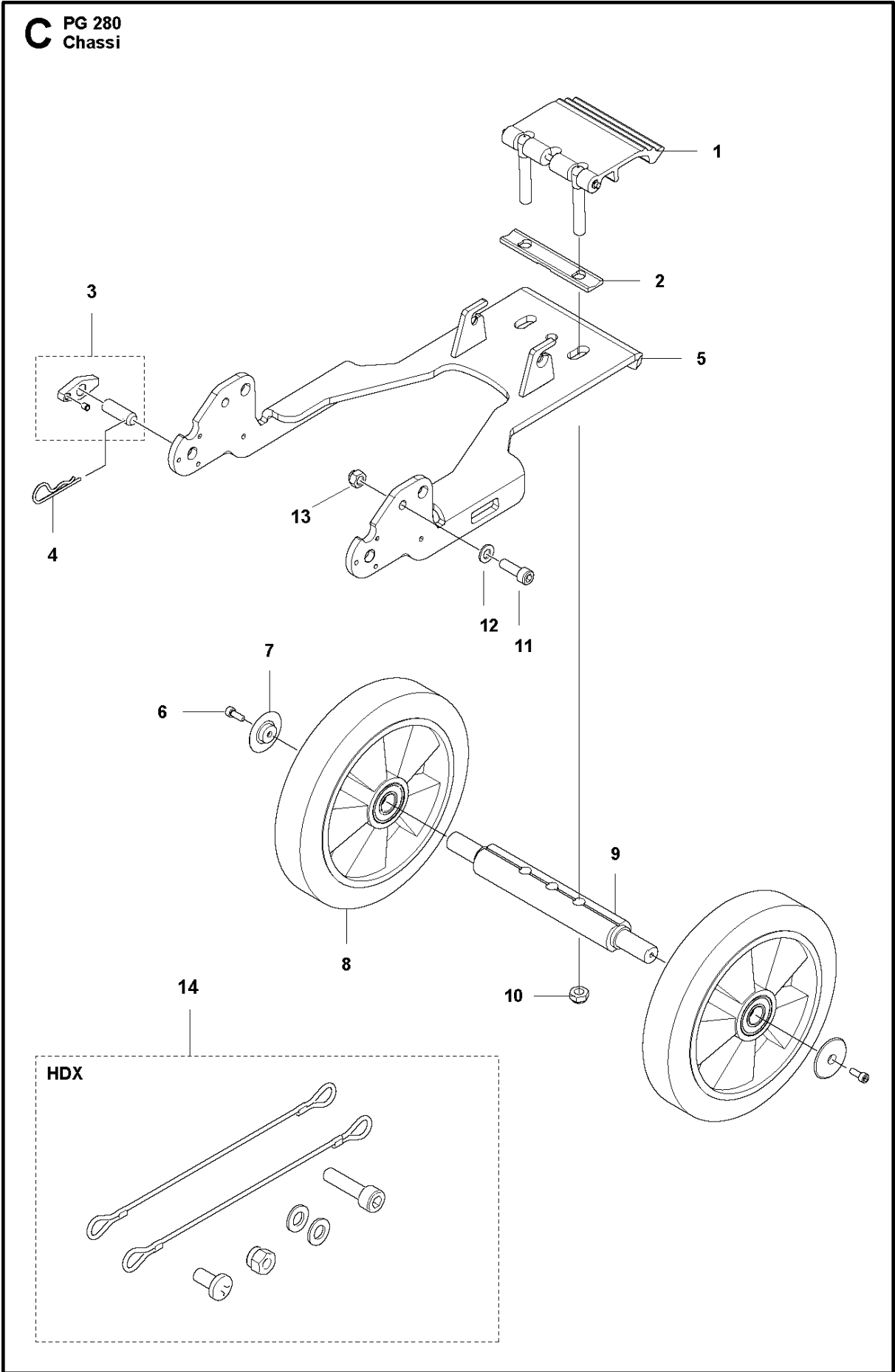


| Ref | Part No      | Description  | Remark          | QTY | KIT |
|-----|--------------|--------------|-----------------|-----|-----|
| 1   | 585 30 19-01 | MOTOR        | 220-240V, 50 Hz | 1   |     |
| 1   | 585 30 19-02 | MOTOR        | 220-240V, 60 Hz | 1   |     |
| 1   | 594 73 61-03 | MOTOR        | 100-120V, 50 Hz | 1   |     |
| 1   | 585 30 21-02 | MOTOR        | 100-120V, 60 Hz | 1   |     |
| 2   | 587 17 46-01 | FAN COVER    |                 | 1   | 1   |
| 3   | 734 11 46-01 | WASHER       |                 | 4   | 1   |
| 4   | 724 13 23-01 | SCREW CRPANM |                 | 4   | 1   |
| 5   | 587 17 47-01 | FAN          |                 | 1   | 1   |
| 6   | 585 42 33-03 | HANDLE       |                 | 1   |     |
| 7   | 725 54 53-01 | SCREW IHSCM  |                 | 2   |     |
| 8   | 731 23 18-01 | HEXAGON NUT  |                 | 4   |     |
| 9   | 588 13 38-01 | BRACKET      |                 | 1   |     |
| 10  | 725 54 51-01 | SCREW IHSCM  |                 | 2   |     |

**B** PG 280  
Grinding Head

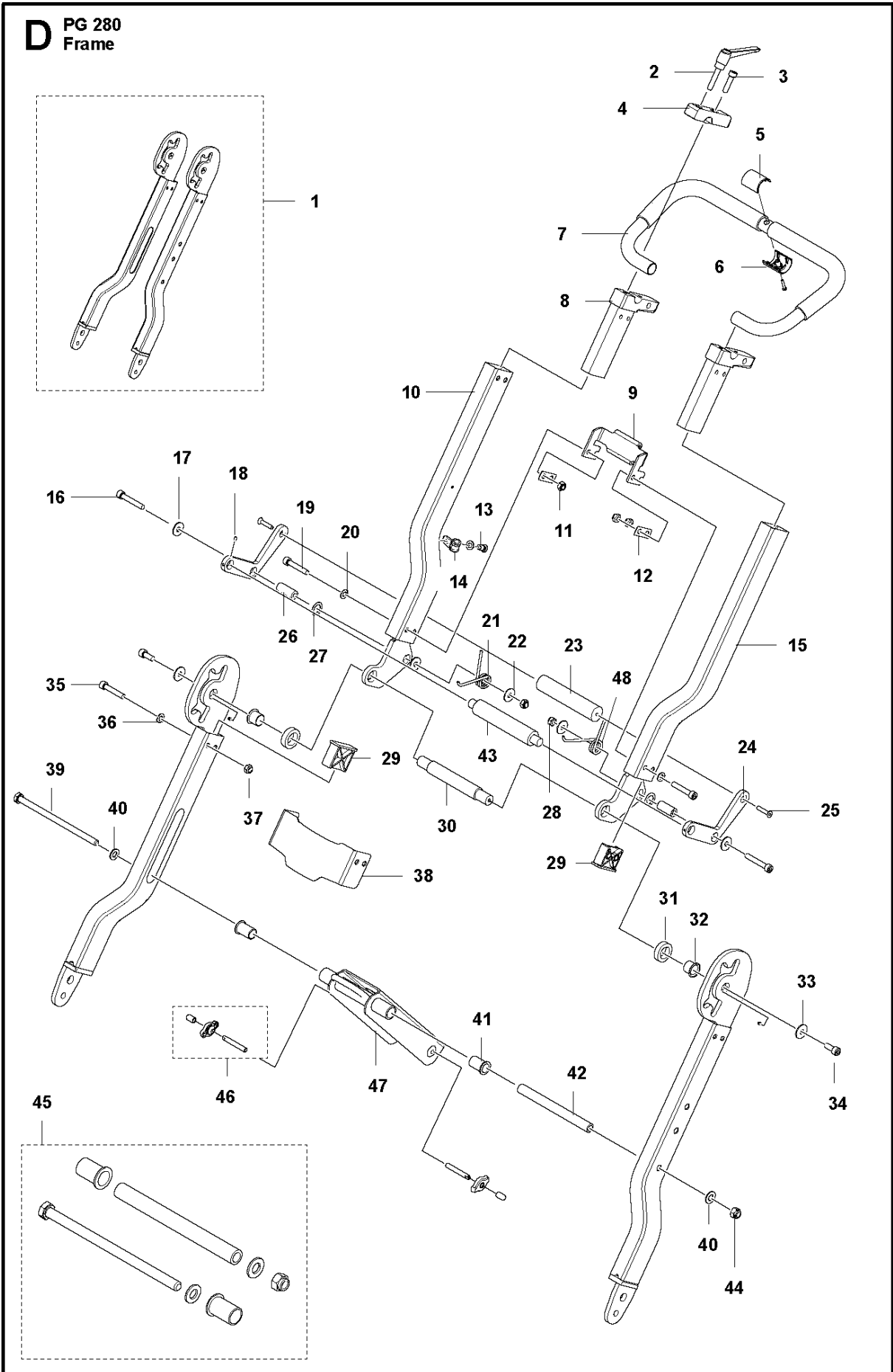


| Ref | Part No      | Description    | Remark           | QTY KIT |    |
|-----|--------------|----------------|------------------|---------|----|
| 1   | 585 13 87-01 | COVER          |                  | 1       |    |
| 2   | 582 63 99-01 | BRUSH KIT      |                  | 1       |    |
| 3   | 735 58 35-01 | WASHER         |                  | 4       |    |
| 4   | 734 11 52-60 | WASHER         |                  | 4       |    |
| 5   | 510 36 16-03 | SCREW          |                  | 4       |    |
| 6   | 586 99 93-01 | COVER LID      |                  | 1       |    |
| 7   | 585 52 44-02 | SPACER         |                  | 1       |    |
| 8   | 721 12 59-30 | GROOVED PIN    |                  | 4       |    |
| 9   | 585 12 83-01 | MOUNTING PLATE |                  | 1       |    |
| 9   | 585 12 83-02 | MOUNTING PLATE | HDX variant only | 1       |    |
| 10  | 585 41 11-01 | BRACKET        |                  | 2       |    |
| 11  | 725 63 69-01 | SCREW IHCSFM   |                  | 4       |    |
| 12  | 734 11 63-01 | WASHER         |                  | 4       |    |
| 13  | 734 11 63-01 | WASHER         |                  | 4       |    |
| 14  | 597 76 88-01 | GRINDING DISC  |                  | 1       |    |
| 15  | 589 92 58-01 | V-RING         |                  | 1       | 14 |
| 16  | 725 54 53-01 | SCREW IHSCM    |                  | 6       | 14 |
| 17  | 594 89 54-01 | COUPLER        |                  | 1       | 14 |
| 18  | 725 63 70-51 | SCREW IHCSFM   |                  | 8       | 14 |
| 19  | 725 63 66-51 | SCREW IHCSFM   |                  | 8       | 14 |
| 20  | 597 75 11-01 | PLATE          |                  | 1       | 14 |
| 21  | 584 81 61-01 | ABSORBER       |                  | 4       | 14 |
| 22  | 594 89 50-01 | PLATE          |                  | 1       | 14 |
| 23  | 584 81 64-01 | CONNECTION     |                  | 4       | 14 |
| 24  | 734 11 72-01 | WASHER         |                  | 4       | 14 |
| 25  | 725 54 97-01 | SCREW IHSCM    |                  | 4       | 14 |
| 26  | 598 50 21-01 | DISC           |                  | 1       | 14 |
| 27  | 510 23 51-01 | WASHER         |                  | 1       | 14 |
| 28  | 725 24 95-71 | SCREW EHHM     |                  | 1       | 14 |
| 29  | 522 03 97-01 | HAMMER         |                  | 1       |    |



| Ref | Part No      | Description         | Remark           | QTY KIT |
|-----|--------------|---------------------|------------------|---------|
| 1   | 587 03 29-01 | PEDAL ASSY          |                  | 1       |
| 2   | 586 92 75-01 | WASHER              |                  | 1       |
| 3   | 586 99 17-01 | BOLT                |                  | 2       |
| 3   | 586 99 17-03 | BOLT                | HDX variant only | 2       |
| 4   | 721 68 02-51 | SPRING COTTER       |                  | 2       |
| 5   | 585 14 05-02 | FRAME               |                  | 2       |
| 6   | 725 53 68-51 | SCREW IHSCM         |                  | 2       |
| 7   | 501 32 12-01 | WASHER              |                  | 2       |
| 8   | 504 18 55-01 | WHEEL               |                  | 2       |
| 9   | 585 14 12-01 | AXLE                |                  | 1       |
| 10  | 732 25 22-01 | HEXAGON LOCKING NUT |                  | 2       |
| 11  | 725 54 95-01 | SCREW IHSCM         |                  | 2       |
| 12  | 734 11 72-01 | WASHER              |                  | 2       |
| 13  | 732 25 20-01 | HEXAGON LOCKING NUT |                  | 2       |
| 14  | 590 54 00-02 | WIRE                | HDX variant only | 1       |

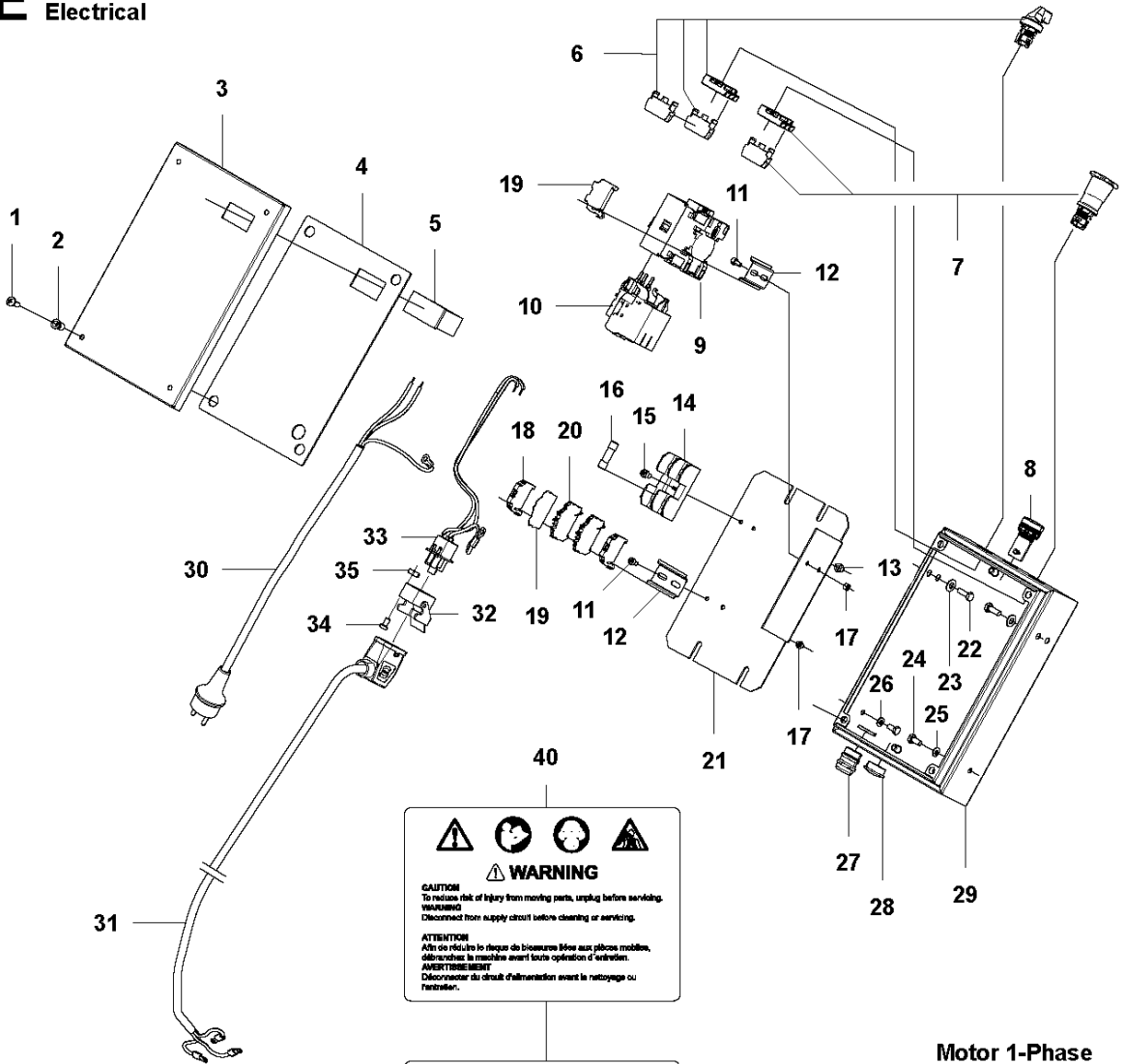
**D** PG 280  
Frame





| Ref | Part No      | Description         | Remark           | QTY KIT |
|-----|--------------|---------------------|------------------|---------|
| 1   | 593 89 71-01 | FRAME TUBE          |                  | 1       |
| 2   | 585 12 92-01 | LOCKING HANDLE      |                  | 2       |
| 3   | 725 54 55-21 | SCREW IHSCM         |                  | 2       |
| 4   | 585 51 66-01 | BRACKET             |                  | 2       |
| 5   | 587 15 85-01 | COVER               |                  | 1       |
| 6   | 587 15 86-01 | COVER               |                  | 1       |
| 7   | 585 14 40-01 | HANDLE              |                  | 1       |
| 8   | 589 83 77-01 | BRACKET             |                  | 2       |
| 9   | 585 38 28-02 | BRACKET             |                  | 1       |
| 10  | 585 57 35-07 | FORK                |                  | 1       |
| 11  | 732 21 18-01 | LOCK NUT            |                  | 8       |
| 12  | 585 38 31-01 | WASHER              |                  | 2       |
| 13  | 725 53 68-01 | SCREW IHSCM         |                  | 1       |
| 14  | 589 66 91-01 | CLIP                | AUS/US/BR 230V   | 1       |
| 14  | 589 66 91-02 | CLIP                |                  | 1       |
| 14  | 589 66 91-03 | CLIP                | US 100-120V      | 1       |
| 15  | 585 57 35-08 | FORK                |                  | 1       |
| 16  | 725 54 60-01 | SCREW IHSCM         |                  | 8       |
| 17  | 734 11 63-01 | WASHER              |                  | 8       |
| 18  | 728 82 85-01 | SCREW IHSETM        |                  | 6       |
| 19  | 725 54 61-01 | SCREW IHSCM         |                  | 2       |
| 20  | 734 11 64-41 | WASHER              |                  | 4       |
| 21  | 585 41 73-01 | SPRING              |                  | 1       |
| 22  | 734 11 65-41 | WASHER              |                  | 4       |
| 23  | 585 13 37-02 | HANDLE              |                  | 1       |
| 24  | 585 13 33-01 | PLATE               |                  | 2       |
| 25  | 725 63 74-51 | SCREW               |                  | 2       |
| 26  | 585 38 33-02 | SLEEVE              |                  | 2       |
| 27  | 585 41 62-01 | WASHER              |                  | 2       |
| 28  | 732 21 18-01 | LOCK NUT            |                  | 2       |
| 29  | 585 13 29-01 | SPACER              |                  | 4       |
| 30  | 585 13 36-02 | TUBE                |                  | 1       |
| 31  | 585 13 35-01 | SPACER              |                  | 2       |
| 32  | 585 41 60-01 | BUSH                |                  | 2       |
| 33  | 734 11 65-41 | WASHER              |                  | 2       |
| 34  | 732 21 18-01 | LOCK NUT            |                  | 2       |
| 35  | 725 54 60-01 | SCREW IHSCM         |                  | 8       |
| 36  | 734 11 63-01 | WASHER              |                  | 8       |
| 37  | 732 25 18-01 | HEXAGON LOCKING NUT |                  | 10      |
| 38  | 585 38 30-02 | BRACKET             |                  | 1       |
| 38  | 585 38 30-04 | BRACKET             | HDX variant only | 1       |
| 39  | 590 10 50-01 | BOLT                |                  | 1       |
| 40  | 734 11 72-01 | WASHER              |                  | 2       |
| 41  | 585 12 91-01 | BUSH                |                  | 2       |
| 42  | 590 09 29-01 | PIPE                |                  | 1       |
| 43  | 585 13 38-02 | ROD                 |                  | 1       |
| 44  | 732 25 20-01 | HEXAGON LOCKING NUT |                  | 1       |
| 45  | 593 90 94-01 | CROSSBAR            |                  | 1       |
| 46  | 590 47 22-01 | WING KNOB           |                  | 2       |
| 47  | 585 14 18-02 | SUPPORT             |                  | 1       |
| 48  | 585 41 61-01 | SPRING              |                  | 1       |

**E** PG 280  
Electrical

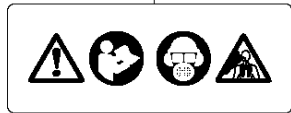


**⚠ WARNING**

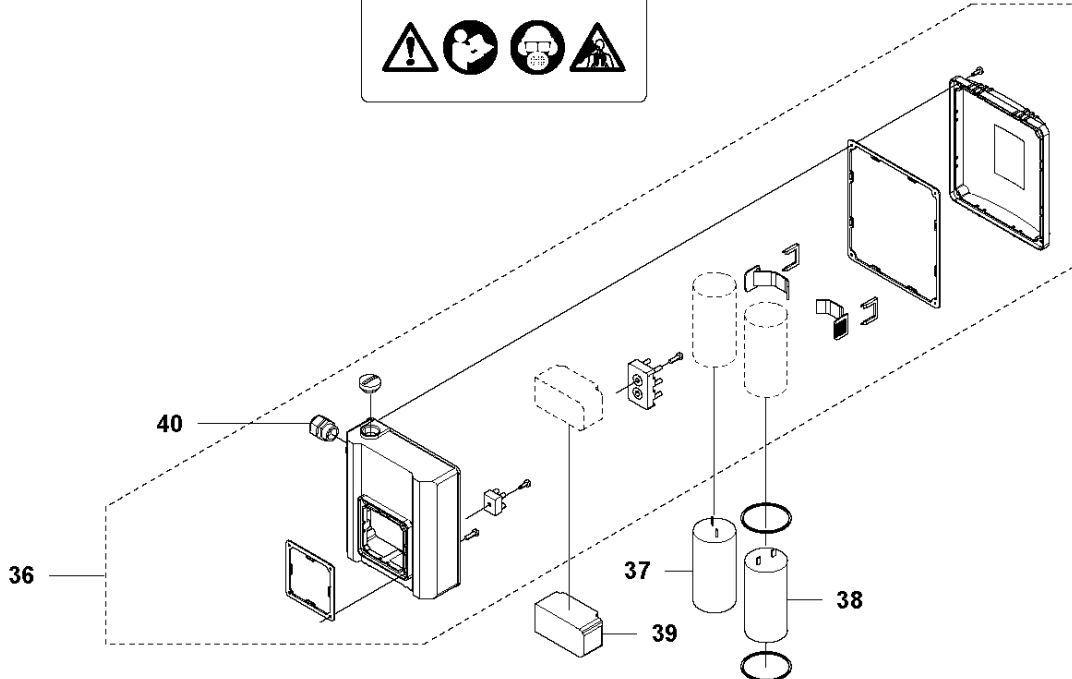
**CAUTION**  
To reduce risk of injury from moving parts, unplug before servicing.  
Déconnecter le matériel avant toute opération d'entretien.

**ATTENTION**  
Afin de réduire le risque de blessures liées aux pièces mobiles, déconnecter le matériel avant toute opération d'entretien.

**AVERTISSEMENT**  
Déconnecter du circuit d'alimentation avant le nettoyage ou l'entretien.



**Motor 1-Phase**



| Ref | Part No      | Description           | Remark                  | QTY KIT |
|-----|--------------|-----------------------|-------------------------|---------|
| 1   | 724 13 68-51 | SCREW CRPANM          |                         | 4       |
| 2   | 521 88 66-01 | RIVET                 |                         | 4       |
| 3   | 586 47 43-01 | LID                   |                         | 1       |
| 3   | 586 47 43-03 | LID                   | HDX variant only        | 1       |
| 4   | 586 46 70-02 | SEALING               |                         | 1       |
| 5   | 584 29 63-01 | HOUR METER            |                         | 1       |
| 6   | 586 99 15-01 | SWITCH KIT            |                         | 1       |
| 7   | 586 99 16-01 | SWITCH KIT            |                         | 1       |
| 8   | 584 29 71-01 | LAMP                  | 230V                    | 1       |
| 8   | 584 29 71-02 | LAMP                  | 110V                    | 1       |
| 9   | 585 36 58-01 | CONTACTOR             | 200-230V, 50/60Hz       | 1       |
| 9   | 585 36 58-02 | CONTACTOR             | 100-120V, 60Hz          | 1       |
| 9   | 586 99 18-01 | CONTACTOR             | 100-120V, 50Hz          | 1       |
| 10  | 584 29 78-01 | RELAY                 | 1 phase, 220-240V, 50Hz | 1       |
| 10  | 580 62 35-02 | PROTECTION            | 1 phase, 220-240V, 60Hz | 1       |
| 10  | 580 62 35-01 | PROTECTION            | 1 phase, 100-120V, 50Hz | 1       |
| 11  | 725 53 25-01 | SCREW IHSCM           |                         | 4       |
| 12  | 522 74 70-01 | RAIL                  |                         | 2       |
| 13  | 731 23 16-01 | HEXAGON NUT           |                         | 1       |
| 14  | 525 88 26-01 | FUSE HOLDER           |                         | 1       |
| 15  | 725 53 64-55 | SCREW IHSCM           |                         | 1       |
| 16  | 525 63 81-01 | FUSE                  |                         | 2       |
| 17  | 732 25 14-01 | HEXAGON LOCKING NUT   |                         | 4       |
| 18  | 585 36 61-05 | TERMINAL BLOCK        |                         | 3       |
| 19  | 585 36 61-03 | TERMINAL BLOCK        |                         | 1       |
| 19  | 585 36 61-07 | TERMINAL BLOCK        | US 1ph 100-120V         | 1       |
| 20  | 585 61 35-01 | TERMINAL BLOCK        |                         | 2       |
| 20  | 585 36 61-01 | TERMINAL BLOCK        | US 1ph 100-120V         | 2       |
| 21  | 590 07 58-01 | MOUNTING PLATE        |                         | 1       |
| 22  | 725 24 51-71 | SCREW EHHM            |                         | 4       |
| 23  | 734 11 63-01 | WASHER                |                         | 4       |
| 24  | 725 23 66-51 | HEXAGONAL SCREW M6X12 |                         | 2       |
| 25  | 734 11 52-01 | WASHER                |                         | 1       |
| 26  | 735 21 53-01 | LOCKWASHER            |                         | 4       |
| 27  | 575 48 98-01 | GROMMET               |                         | 1       |
| 27  | 587 10 12-01 | GROMMET               | US 1ph 100-120V         | 1       |
| 28  | 586 58 69-01 | PLUG                  |                         | 1       |
| 28  | 587 10 12-01 | GROMMET               | US variant only         | 1       |
| 29  | 582 50 69-03 | ELECTRONIC BOX        |                         | 1       |
| 29  | 582 50 69-04 | ELECTRONIC BOX        | HDX variant only        | 1       |
| 30  | 586 23 68-03 | CABLE                 |                         | 1       |
| 30  | 586 23 68-02 | CABLE                 | AUS                     | 1       |
| 30  | 586 23 68-12 | CABLE                 | US 120V                 | 1       |
| 30  | 586 23 68-13 | CABLE                 | US 240V                 | 1       |
| 30  | 586 23 68-08 | CABLE                 | BR                      | 1       |
| 31  | 585 63 81-08 | CABLE                 | UK and JP               | 1       |
| 31  | 585 63 81-10 | CABLE                 | US/CAN 220-240V         | 1       |
| 31  | 585 63 81-11 | CABLE                 | US/CAN 100-120V         | 1       |
| 32  | 585 36 66-05 | CONNECTOR             |                         | 1       |
| 33  | 590 50 35-01 | CONNECTOR             |                         | 1       |
| 34  | 725 52 24-01 | SCREW                 |                         | 2       |
| 35  | 732 25 10-01 | HEXAGON LOCKING NUT   |                         | 2       |
| 36  | 587 17 39-01 | ELECTRONIC BOX        | 1-ph                    | 1       |
| 36  | 587 17 39-02 | ELECTRONIC BOX        | 3-ph                    | 1       |
| 37  | 587 17 45-01 | CAPACITOR             | 208-230V, 50/60Hz       | 1       |
| 37  | 587 17 45-02 | CAPACITOR             | 110V, 50Hz              | 1       |
| 38  | 587 17 44-01 | CAPACITOR             | 230V, 50Hz              | 1       |
| 38  | 587 17 44-02 | CAPACITOR             | 208-230V, 60Hz          | 1       |
| 38  | 587 17 44-03 | CAPACITOR             | 110V, 50/60Hz           | 1       |
| 39  | 587 17 43-01 | SWITCH                | 230V, 50Hz              | 1       |
| 39  | 587 17 43-02 | SWITCH                | 208-230V, 60Hz          | 1       |
| 39  | 587 17 43-03 | SWITCH                | 110V, 50/60Hz           | 1       |
| 40  | 590 51 83-01 | DECAL                 | US/CAN only             | 1       |
| 40  | 590 51 84-01 | DECAL                 | ROW                     | 1       |